

# BUC ADVENTURER CAMPOREE 2018

Thursday 26<sup>th</sup> - Sunday 29<sup>th</sup> July

South of England Showground, West Sussex



## CLUB INFORMATION PACK

[WWW.ADVENTISTYOUTH.ORG.UK](http://WWW.ADVENTISTYOUTH.ORG.UK)

Hosted by:

Pastor Dejan Stojkovic, UK & Ireland Youth Ministries Director  
07919 172176

Secretary:

Mrs Natalie Davison  
[ndavison@adventist.uk](mailto:ndavison@adventist.uk)  
01923 672251

# Table of Contents

<b>Introduction</b>	2
<b>TRAVEL INFORMATION</b>	3
Travel to Site	3
Directions	3
<b>ARRIVING AT THE CAMPSITE</b>	4
Arrivals	4
Entering The Site	4
Arrival	4
Registration	4
Club camping areas	4
<b>SOUTH OF ENGLAND SHOWGROUND MAP</b>	5
<b>SECURITY</b>	6
Site Security	6
Club Security	6
<b>SAFETY</b>	7
Safety	7
Fires	7
Leaving Site	7
Water Safety	7
Animals on Site	7
<b>MEALS</b>	8
Meals at Camporee	8
Special Dietary Requirements	8
Menu	8
Water	8
<b>WHAT TO BRING</b>	9
<b>CAMPOREE ACTIVITIES</b>	10
Friday Activities	10
Sabbath Activities	10
Adventurer Bible Experience	11
Camporee Theme Song	12
<b>SITE SERVICES</b>	133
Black Bag Waste	133
Waste Water From Kitchens	133
Recycling	133
Toilets & Showers	133
Disabled Facilities	144
Electricity	144
<b>MEDICAL INFORMATION</b>	155
<b>DEPARTURE</b>	20
Departure	20
<b>CAMPOREE PROGRAMME</b>	21
<b>CONTACTS, MORE INFORMATION</b>	22
<b>ADDITIONAL INFORMATION FROM YOU</b>	23

# Introduction

Welcome to the very first ever all British Union Conference Adventurer Camporee!

The aim of the guide is to ensure all club members have a safe, blessed and memorable experience at this camp. The information contained in this booklet provides guidance and support to club leaders preparing for Camporee.

Those attending this camp will be making history on two counts:

- The British Union has never hosted an Adventurer Camporee before and we can't wait to welcome all the clubs onto the campsite.
- The other first will be the ABE – Adventurer Bible Experience that will be hosted on Sabbath at Camporee. More on that later.

We had anticipated 1000 people attending with representation from Ireland, North England, Scotland, South England and Wales as well as visitors from Croatia, Slovenia and Sweden. But in the end, the numbers of people on site will be over 1900! Can you imagine? What a blessing! We hope that this guide will help us to work together to provide a wonderful time for everyone present: Adventurers, club staff, parents, volunteers and special guests.

Read through this guide carefully. Within you should find all the information you require for arrivals and departure; site regulations and requirements; guidelines and information sheets; etc.

If you have any questions, please don't hesitate to contact the BUC Youth Department.



**GUEST SPEAKER:** Our Guest Speaker is Richard Aguilera (aka 'The Mud Guy') from Guide Magazine. He will be joining us at the camporee and taking us on an exciting and interactive adventure into the wonders of God's creation. He is so excited about joining us and can't wait to meet you there!

# TRAVEL INFORMATION

## Travel to Site

### Site Address

South of England Showground,

Ardingly

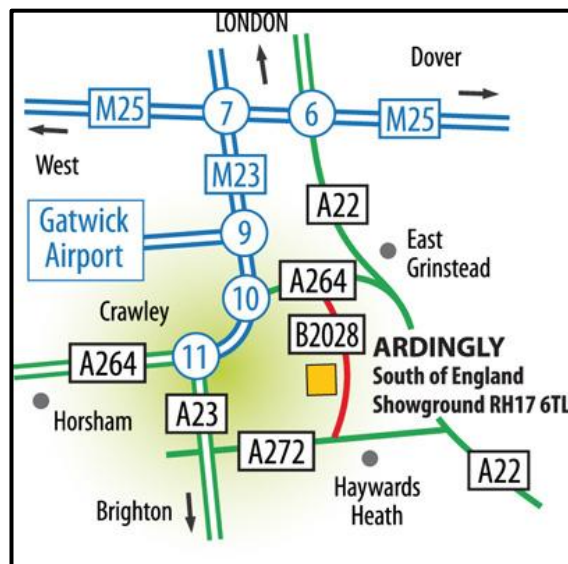
West Sussex

RH17 6TL

Site Website - <http://www.southofenglandevenue.co.uk/about-us/>

BUC Site Office Telephone Number (for emergency use only): 01923 665534.

## Directions



### **By Road (From the M23)**

1. Exit the M23 at Junction 10 and take the A264 towards East Grinstead.
2. At the first roundabout, continue straight on along the A264.
3. At the next roundabout, turn right and head towards Haywards Heath along the B2028. (The South of England Showground is signposted at this roundabout).
4. Continue through the villages of Turners Hill and Selsfield Common.
5. Just before you reach the village of Ardingly you will see the North Gate Entrance to the South of England Showground on your right hand side.

### **By Rail**

The nearest rail stations are located in East Grinstead and Haywards Heath. Please use the Network Rail Timetable facility for more information.

### **By Air**

The Showground is located just 15 minutes away from Gatwick Airport.

# ARRIVING AT THE CAMPSITE

## Arrivals

The Camporee officially starts with Opening Ceremony at 7pm on Thursday 26<sup>th</sup> July. The Registration Desk will be open from **9:30am Thursday 26<sup>th</sup> July**.

If your club needs arrive and set-up in advance you must contact and advise the BUC office 01923 672251 by 20<sup>th</sup> July. The earliest you can get access to the site is **3:00pm Wednesday 25<sup>th</sup> July**.

IF YOU ARRIVE BEFORE THE OFFICIAL START OF THE CAMPOREE ON THURSDAY MORNING BE AWARE THAT ALL FACILITIES MAY NOT BE FULLY SET UP AND AVAILABLE. WITH THIS IN MIND YOU WILL NEED TO PLAN TO BE RESPONSIBLE FOR YOUR MEALS AND GENERAL SAFETY UP UNTIL THURSDAY EVENING.

## Entering The Site

The South of England Showground is a very large site and we will have exclusive use of the north section of the site that will be fenced-off for the BUC Adventurer Camporee. There will be specific gates that you may be directed to use but on arrival you **MUST** enter the site through the North Gate to the large North Car Park off the B2028.

## Arrival

Clubs should arrive at the North Gate and will be met by BUC Camporee Security Volunteers who will direct your Club Leader to the Camp Office to register your arrival.

## Registration

Everyone who arrives on site must immediately register at the Camporee Office. This is required by all clubs and individuals who arrive on Wednesday or Thursday.

At registration you will need to confirm how many have arrived. If your club arrives at a later time or date they will need to register separately on arrival.

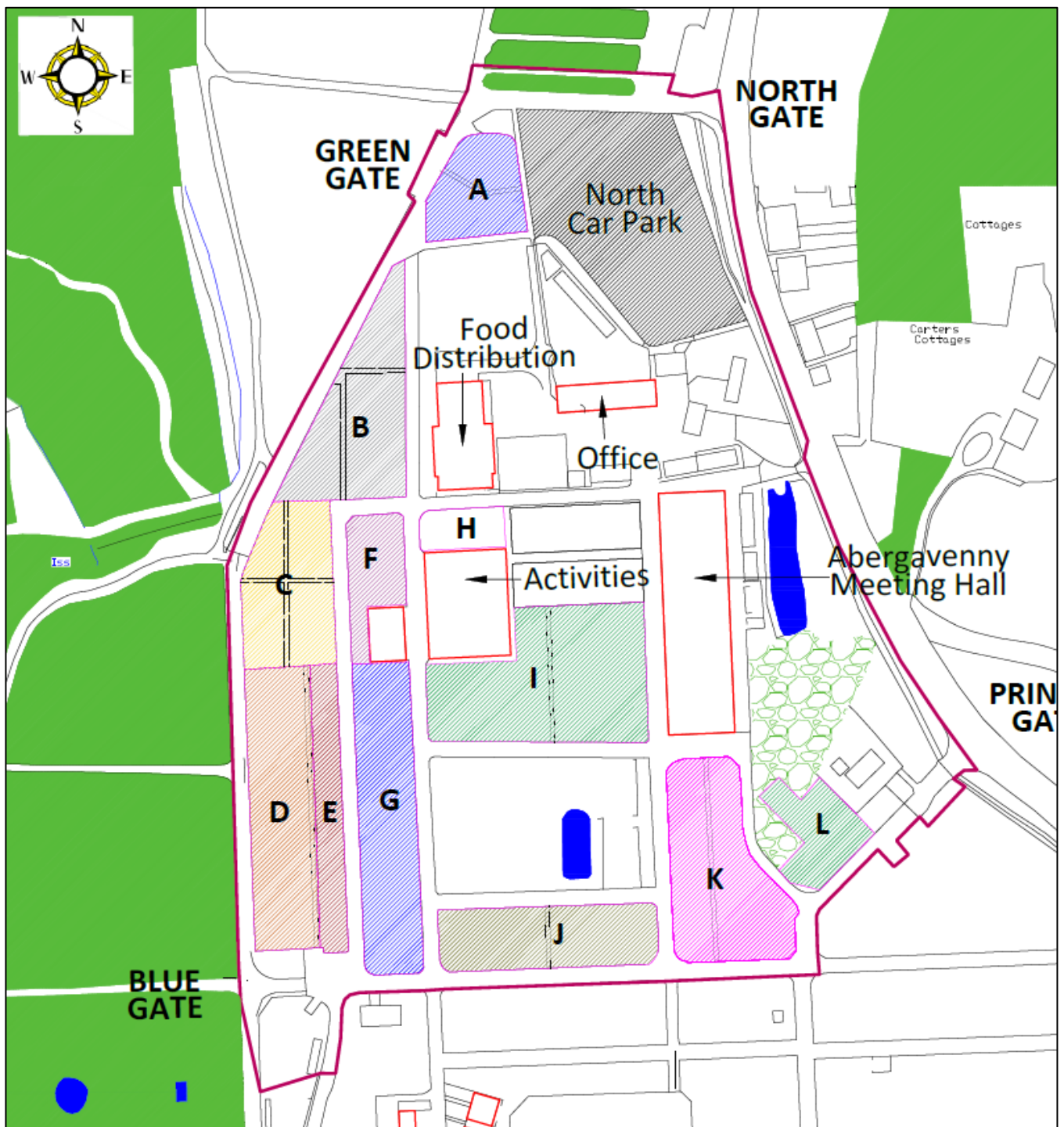
At Registration you will receive all arrival information, and a plan showing the site and the area in which your club will be able to pitch camp.

## Club camping areas

When you return to your vehicles, BUC Security Volunteers will then be able to direct you to your site, where you should be able to unload all equipment and set up camp in your designated area.

WHEN UNLOADED ALL VEHICLES MUST BE REMOVED FROM THE ACCESS ROADS AND RETURNED TO THE NORTH CAR PARK FOR THE DURATION OF THE CAMP. Please ensure you always respectfully follow the instructions of Security and those managing the traffic.

## SOUTH OF ENGLAND SHOWGROUND MAP



Above is a plan of the north section of the Showground we will be using for Adventurer Camporee. On arrival you will be directed to your allocated club camp site in one of the lettered camping areas B to L.



# SECURITY

## **Site Security**

A team of BUC Volunteers will be providing 24/7 security for the area we are camping in and our car park for the duration of the Camporee. Please cooperate with them and do not be offended if it is necessary for them to challenge you while you are on site.

It may be necessary at times for one or two members of staff from the South of England Showground to be on our part of the site or to be passing through it. They will only be there to assist us on specific tasks or emergencies and will always be wearing their Showground polo shirts.

## **Club Security**

Although there will be BUC Site Security, Adventurer Club Leaders must always take responsibility for knowing the whereabouts of all every person within their clubs at all times.

Exercise basic awareness and plan to prevent your club being involved in any security or safety incident by carrying out your own club risk assessment for your club and your own site. The information in this pack should help with this by providing information about what will be happening at the Camporee.

With this in mind, please do not leave any valuables openly visible in tents or cars and ensure any vehicles you have are kept locked when in the car park.

# SAFETY

## **Safety**

A risk assessment for the whole Camporee has been conducted by a competent BUC Risk Assessment Team, but this is an overall assessment for the entire camporee from the organiser's point of view. Each club leader should conduct their own risk assessment for their individual club needs. The information in this booklet should assist with this.

## **Fires**

### **Cooking Fires**

You will need to bring your own gas cookers, gas bottles and regulators. Please ensure you bring sufficient gas for your needs for the duration of the Camporee.

### **Open Fires**

No open fires are permitted on site except for the Camporee bonfire on Saturday evening.

## **Leaving Site**

Anyone needing to leave the campsite in a vehicle should log in their departure and expected arrival in the Arrivals/Departure book in the Camporee Office.

## **Water Safety**

There will be no swimming activities at this camp. There are two small pools in the area occupied by the BUC. They will not be part of any activities and the BUC Field Support Team will ensure they are made safe to prevent access to them.

## **Animals on Site**

For the safety of the campers, no animals will be allowed on site during the Camporee. The area to the south of the site will have a 'Dog Agility Event' taking place on Sabbath with preparations ongoing whilst we are on the northern site. Please be mindful of this and stay within our camp boundaries.



# MEALS

## Meals at Camporee

Part of the fees your club paid is for the provision of all ingredients needed to prepare your meals at Adventurer Camporee. Meals will be vegetarian. You will be receiving sufficient ingredients for your children and adults based on the numbers you sent us.

	Available for collection from	
	10:00am	6:00pm
<b>Thursday 26<sup>th</sup></b>		(On Thursday available after you register) Club Starter Pack Thursday Supper Ingredients Friday Breakfast Ingredients Friday Fruit Pack
<b>Friday 27<sup>th</sup></b>	Friday Fruit Top-up Friday Lunch Ingredients Friday Supper Ingredients	Sabbath Fruit Top-up Sabbath Breakfast Ingredients Sabbath Lunch Ingredients Sabbath Supper Ingredients
<b>Sabbath 28<sup>th</sup></b>	Emergency food only	Sunday Fruit Top-up Sunday Breakfast Ingredients
<b>Sunday 29<sup>th</sup></b>	(Can collect from 8:30am) Ingredients for food to travel home.	

Your Starter pack can be topped up at the Food Distribution Hall as items are required.

You need to send your Club Staff with bags and trolleys and be prepared to collect your ingredients from the Food Distribution Hall as there may not be sufficient volunteers available at delivery times. A large cool box to keep certain items fresh during the day would be advised.

## Special Dietary Requirements

We will be providing suitable alternatives for those of you who have noted their special dietary requirements on the club spreadsheet. Please review the names and inform the BUC Office if there are any changes before 1<sup>st</sup> July to assist us in the food purchasing.

## Menu

The menu is available to view on the website in the Camporee FAQs and suggested meal preparation cards will be available at the camp. You can obviously bring anything you wish to enhance or customise your meals.

## Water

Water for cooking will be available from the standpipes located at many places on the campsite. It is mains supply water and is suitable for drinking.

## WHAT TO BRING

Here is a short list of some useful items – please note it is not exhaustive. You should have your own list of items that you provide to your Adventurers and Staff.

- Tents and sleeping bag/mattress
- Cooking equipment
- Personal cutlery, crockery and drinking cup
- Water bottle clearly labelled with your name (and club)
- Adequate changes of clothing including warm clothing – it may be fine during the day, but mornings and evenings can be cold
- Waterproof clothing in the event of wet weather
- Sunscreen and sun hat in the event of warm weather
- Sleeping wear
- Washing items (towel, soap, shampoo, toothbrush, toothpaste, etc.)
- Bible
- Sensible shoes and trainers
- Dress uniform (Sabbath morning, including inspection)
- Field uniform

As would be expected, please ensure your Adventurers have sufficient suitable clothing for very warm weather, cold weather at night and most importantly wet weather.

### Mobile Phones

It goes without saying that Adventurers and Club Staff will be bringing along their mobile phones and tablets not only for communicating but also to take back picture memories of the Camporee. Clubs and individuals should ensure electronic items along with all personal belongings are always kept safe. Do not assume there will always somewhere for them to be charged. Battery packs are recommended for these events as these are far easier to recharge and can provide the necessary back-up power you may need. Solar powered ones provide even greater charging options.

# CAMPOREE ACTIVITIES

Several interesting and exciting activities have been planned for Friday with special Sabbath activities almost complete. Specific instructions will be provided in your Registration Packs.

## **Friday Activities** – 10:30 to 12:00, 2:30 to 3:30, 4:00 to 5:30

1. FUN (Inflatable Castles, Obstacle Courses, Climbing Wall)
2. SKILL (Pioneering, First Aid Helper)
3. CRAFT (Floods & fossils, Adinkra, Ants)

## **Sabbath Activities**

1. Adventurer Bible Experience
2. ADRA Award

Please cooperate with the Activities Staff and Volunteers at all times to ensure safety is maintained whilst the Adventurers are learning and enjoying their activities. Procedures are in place to ensure the safety of everyone taking part or supervising.

Clubs Staff should always attend the activities with their Adventurers and may at times be required to help manage them through the Activity.

Some of the Activities have had special Adventurer Awards created for them that they can collect at the end of the Camporee. They will be earned when your Adventurer completes the activity session and all the necessary paperwork has been signed by the Activity Leader.

Please remember however that the activities are **specifically for Adventurers**. This includes Little Lambs and Eager Beavers (4yr and 5yr olds) too. Those children who are Pathfinders and children under 4-years of age will not be able to participate. (Sorry for the under 4's, our insurance doesn't cover their involvement)

**Sabbath/day visitors are not permitted at this Camporee for security reasons.**

# ADVENTURER BIBLE EXPERIENCE

This is the first event of its kind, certainly within the British Union, so once again you are making history!

The passage chosen fits in with our Camporee theme: the book of Genesis chapters 1-6 NKJV.

Please note the following:

- The NKJV is the same version used in the Pathfinder Bible and the Pathfinder Bible Experience.
- The Bible commentary for the same passage will not form part of the testing.
- Each club is invited to submit a team of 6 Adventurers plus one substitute (who may sub in at half time).
- Only Adventurer-aged children are permitted to answer the questions.
- An adult should also be chosen to accompany the club, and that person will act as a grader. This person should also be in full dress uniform.
- Other club members will be able to participate by supporting their team.
- Sample questions (for you to judge the degree of difficulty) are available on the [Camporee FAQ page](#).
- If you are intending to submit a team, please complete the questionnaire at the end of this information pack.

## CAMPOREE THEME SONG

The theme song has been specially written for this event and is available in MP3 format, sheet music (full score) and sheet music (parts). Please do practise it with the children so that it will be familiar to them when they arrive at camp and we can all enjoy singing it together!

The song is called, 'How Beautiful It Is' and tells the story of creation in a fun and memorable way for the children.

All of these links are also available from the [Camporee FAQ](#) page on the website:

[How Beautiful It Is – MP3 Audio file](#)

[How Beautiful It Is – sheet music \(full score\)](#)

[How Beautiful It Is – sheet music \(parts\)](#)

# SITE SERVICES

## **Black Bag Waste**

You will be advised where the Skips will be located on the campsite and you are asked to please ensure all refuse is properly sealed inside a bin bag and placed carefully inside the skip to ensure the lid closes back down afterwards to prevent smells escaping and wildlife entering!

## **Waste Water From Kitchens**

We are not allowed to dig wet pits on the site so we are asking that you pay special attention to how you are expected to dispose of your waste water from washing or cooking.

All food needs to be strained from the water and put into your normal black bin bags. This remaining water can then be either carefully poured into the gravel at the side of many of the main roads on the site (called French Drains) or into one of four waste water tanks that the site will be providing for us.

The Showground Site Staff have kindly offered to provide the tanks and empty them into the foul water manholes with fork lifts

## **Recycling**

As good stewardship is an integral part of Adventurers you are asked to ensure your clubs separate anything recyclable and deposit them in recyclable bags or containers. These should then be deposited in the marked recycling bins you will find on site.

## **Toilets & Showers**

During the Camporee we will have exclusive use of the fixed toilets and washing facilities only in our area of the site. As these will not be sufficient for our needs we have ordered additional toilet blocks with sinks and also shower units with individual showers.

Throughout the Camporee they will be maintained, cleaned and stocked by the BUC Camporee Hygiene Team. As usual, please assist them by leaving these areas clean after use.

Showers have been forever a talking point of Camporees as a balance is needed between hire-availability and cost to support individual needs. To minimise problems with long queues for showers we are working on a way to regulate their use and fulfil everyone's needs. The Adventurers and will always be prioritised and you will be informed of the plans at Registration.

## **Disabled Facilities**

Disabled toilets are available in the Blue Toilet Block and the entrance to the Queen's Jubilee Hall for clubs who have reported they have an individual needing to use them. One disabled shower will be available for their use only. We will be sharing it with the organisation using the south section of the site. Clubs with individuals who will need this facility will be advised of its location at Registration.

## **Electricity**

As would be expected at any of our camps there will be no mains electricity available for clubs to use. In your registration pack you will be advised how Club Leaders can charge their mobile phones if necessary. There will be a number of power outlets throughout the buildings on the site. Please note:

1. Do not unplug ANYTHING that is already plugged into an outlet.
2. Do not use any extension cables or multi-plugs to plug into power points.
3. Never leave anything being charged on the ground.
4. Anything left plugged into a socket will be at the owners' risk of theft.



# FIRST AID AND MEDICAL INFORMATION

## **Introduction**

I am sure you are all looking forward to the first BUC Adventurer Camporee at the South of England Agricultural Society Showground. As with all major events involving large numbers of energetic young people, there is always the possibility of needing first aid or medical attention. To help you enjoy the Camporee there are a few things that can be done to minimise the impact accident or illness can have on your club.

First, I would like to emphasise the first aid and medical facilities are provided at a “first Aid” level. A campsite cannot provide hospital or GP facilities. Also, if a medical problem develops BEFORE you leave for the Camporee, please seek GP advice before you travel. The BUC First Aid and Medical facilities are to be used ONLY for conditions that present during the Camporee.

## **Club Requirements**

### **Personnel**

Each Club should have at least one person qualified in first aid who knows how to manage minor injuries and medical problems like insect bites, sprains and small cuts.

Also, all club staff and Pathfinders must have Health Forms giving medical conditions, regular drugs, next of kin and loco parentis.

### **Equipment**

A well-stocked First Aid Kit is essential. There are many on the market, but you can usually make one up yourself if you wish. You should be able to treat minor cuts, bruises, sprains, insect bites dehydration and sunburn.

Any reputable chemist, supermarket or outdoor shop, will be able to sell a first aid kit. If you type “First Aid Kit” into [www.google.co.uk](http://www.google.co.uk) you will be overwhelmed with the choice. A good source for a first aid kit is a chandler for boat equipment. The kits usually come in a waterproof box that can withstand the worst Camporee weather especially rainfall. If you have a large club you will need a large kit. As a rough guide you will need the following:

- Adhesive plasters – various sizes
- Adhesive tape 1cm and 2cm wide
- Gauze squares (approximately 5cm X 5 cm)
- Non-Adhesive Dressings such as *Melolin* and *tulle gras* (approximately 5cm X 5 cm)

- Crêpe Bandages (5cm wide but 10 cm may be useful)
- Linen Broad Arm Slings
- Strong pair of sharp scissors (not blunt)
- Sun creams or sprays, at least factor 20
- Lotions for after sunburn treatment
- Insect bite cream (antihistamine)

These are the basic requirements. You can have more if you wish but, if it helps, remember that safety pins are for nappies. They are never used in Accident and Emergency departments - tape is used instead. Also, thorough cleaning of a wound, with clean tap water, is the way to avoid infection. Antiseptic creams and lotions are not needed.

## **Drugs**

The subject of drugs in the Camporee context has probably caused more confusion than anything else. There is an assumption that a club cannot carry even Paracetamol in the baggage let alone a first aid kit. The rules, applying to the administration of drugs to children under 18, only apply to “administration”, not storage or transport of the drug.

There is no problem with a club carrying various over the counter (OTC) drugs which can then be prescribed on the advice of those providing first aid and medical treatment at the Camporee. Please remember the first aid and medical facilities are not a “free” pharmacy. Every drug used at the Camporee will have to be paid for by somebody. In order to keep the Camporee fees to a minimum it is expected the clubs will pay for any OTC drug expenditure.

It is strongly recommended that each club should carry a supply of the following OTC drugs, as these will NOT be provided by the BUC.

### **Analgesics (pain killers)**

Paracetamol

Co-codamol 8/500

### **Anti-inflammatory drugs**

Ibuprofen (also known as neurofen)

### **Anti-diarrhoeal**

Loperamide

## **Constipation**

Plenty of Fruit and Vegetables, if this fails, lactulose

## **Antihistamines** (for insect bites)

Chlorpheniramine (Piriton) *Sedating*

Cetirizine *Non-sedating*

Anthisan cream

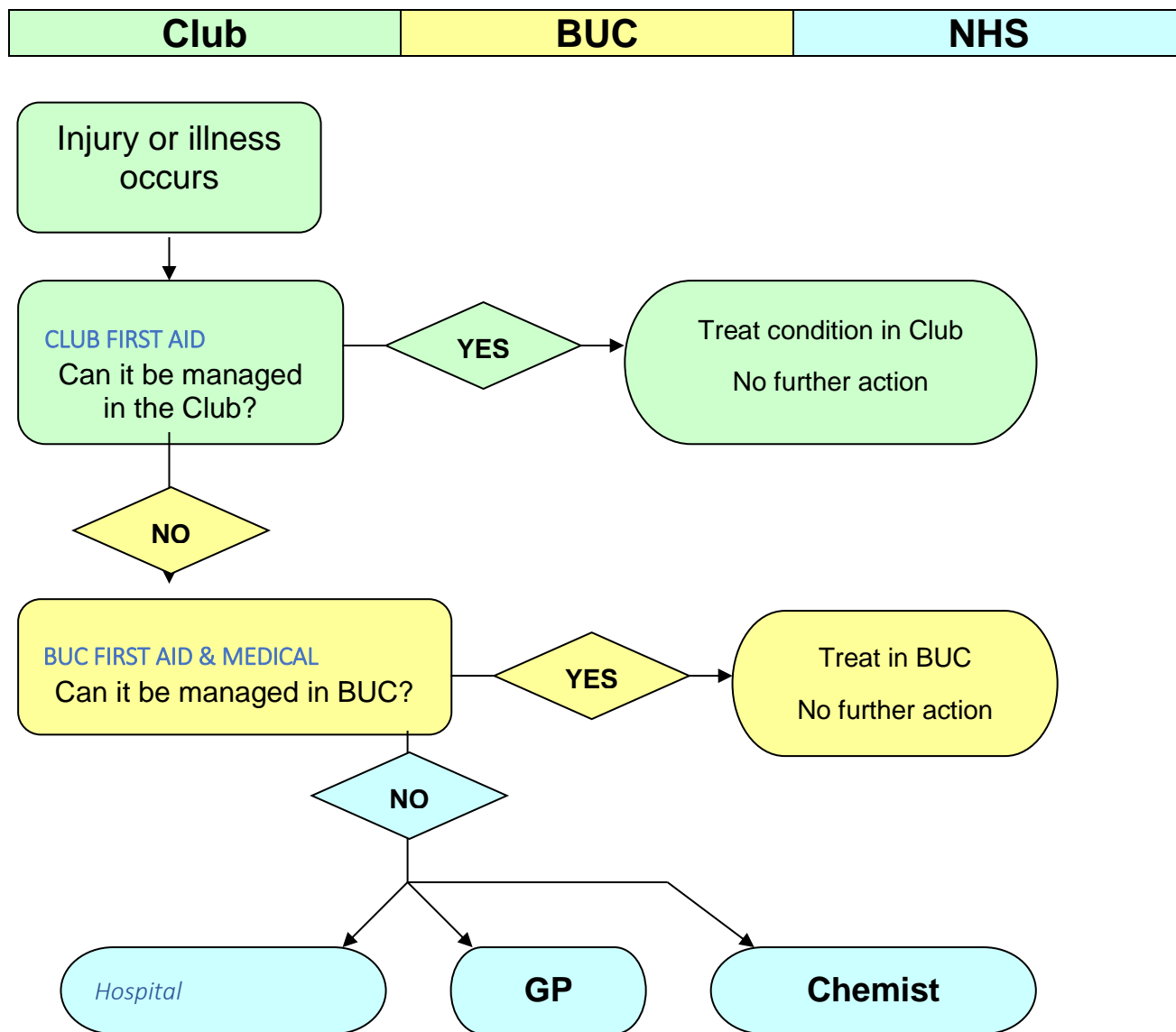
Any other drugs, such as antibiotics, will have to be provided via the local GP or Accident and Emergency facility, which means each club will have to provide their own transport to such a facility for non-999 cases.

Finally, a word about regular medication for Pathfinders and staff, who have long term medical conditions, such as diabetes and asthma. Please remember the first aid and medical facility is not a pharmacy so we will not be able to provide the missing drugs. Each club will be responsible for seeking a local GP for a prescription to take to a local chemist.

## Seeking First Aid and Medical Advice

The way to access first aid and medical advice is given in the algorithm below:

**Please note** All “Patients” under 18 years of age MUST be accompanied by a club leader at all times, plus the Health Form (part of the Camporee application form), when seeking first aid or medical attention.



**Please note club leaders are responsible for providing transport to hospital, GP or Chemist**

There are a few medical problems that are associated with events such as Camporees. Most are avoidable with proper care and preparation.

### **Food poisoning**

This is thankfully not as common as people think but can be avoided by the following:

- Catering staff to take a course in food preparation and hygiene. The course provides the necessary qualifications to defend the club against complaints and, at worst, litigation.
- Wash hands before meals and after using the toilet. Club staff should always make sure there is the necessary soap and water available, so the Adventurers have no excuse to avoid this essential activity. There are fancy lotions and alcohol gel on the market these days, but soap and water are still the best especially for clostridium (a bacterium).
- Make sure there is proper rubbish and waste disposal arrangements in place.

### **Dehydration and Constipation**

If the weather is hot and dry, unusual for the UK, the Adventurers will still like to run around and play, burning up lots of energy (so hopefully they will sleep at night) but they will also sweat. This means they will become dehydrated, followed by exhaustion then collapse. Their body will be dry which includes their guts and its contents. The hard lumps will cause gut spasm. The lumps will be even harder if there has been a lack of fruit and vegetables in the diet thereby exacerbating the tendency to constipation. Please make sure there are non-fizzy drinks available at all times in the clubs and encourage the Adventurers to drink often as they usually forget.

Finally, may you have an enjoyable time at the Camporee and give the first aid and medical team so little work they feel their services were not needed!

# DEPARTURE

## **Departure**

When your club is ready to leave you need to check-out at the Camporee Office.

The closing ceremony will finish mid-morning on Sunday 29<sup>th</sup> July but for any clubs or individuals that need to leave earlier the Camporee Office will be open from 8.30am.

Advise any coaches, vans, busses or vehicles coming to pick you up to report to the main North Gate when they arrive. They will be directed by the Security Teams to where they can park for loading up.

Your club will need to complete a number of things before they are allowed to leave.

On Sunday morning from 8:30am your Club will need to collect your ingredients for a packed lunch to eat either before you leave or on the way home.

Your site must be left clear of all equipment, pegs, waste (especially bits of plastic) before going to the Camporee Office and requesting inspection by a BUC Field Support Team member.

Camporee badges and any other outstanding items will be issued at check-out once the final inspection has taken place. T-shirts will be issued based on the number and sizes you provided for your club at the time of ordering.

Please aim to complete striking camp by 4:00pm and leave site by 5pm.

# CAMPOREE PROGRAMME

## Adventurer Camporee 2018 Programme



	Start	Finish
<b>Thursday 26th</b>		
Registration	9.30	16.30
Food starter pack/Thurs supper/Fri bkfst & lunch pickup/delivery	13.00	17.30
Supper	17.30	18.45
Club assemble	19.15	19.30
Opening ceremony (flag raising, clubs enter)	19.30	19.59
Evening meeting	20.00	21.00
Lights out	22.00	
<b>Friday 27th</b>		
Wake	7.00	
BUC staff meeting / breakfast	7.15	8.30
Fruit / Emergency food pickup/delivery	8.00	9.00
Breakfast in clubs	7.45	8.45
Worship	9.00	9.45
Friday supper & Sabbath meals pickup/delivery	10.00	11.00
Activity session 1	10.30	12.00
Lunch	12.00	14.00
Fruit / Emergency food pickup/delivery	13.00	14.00
Activity session 2	14.00	15.30
Activity session 3	16.00	17.30
Supper	17.30	19.00
Fruit / Emergency food pickup/delivery	18.00	19.00
Evening meeting	19.30	20.30
Club leaders' meeting	20.30	21.00
Lights out	22.00	
<b>Sabbath 28th</b>		
Wake	7.00	
BUC staff meeting/breakfast	7.00	8.00
Emergency food pickup/delivery	8.00	9.00
Breakfast in clubs	7.15	8.15
Clubs arrive for teams to be seated	8.30	9.00
Adventurer Bible Experience	9.00	9.55
Emergency food pickup/delivery	10.00	10.30
Clubs assemble	10.30	10.45
Uniform inspection	10.45	10.50
Clubs march into marquee	10.50	10.59
Divine worship	11.00	12.35
Emergency food pickup/delivery	13.00	14.00
Lunch	12.45	14.00
Whole camp activity (ADRA village)	14.30	17.30
Fruit/Sunday breakfast & packed lunch pickup/delivery	18.00	19.00
Supper	18.00	19.00
Evening worship	19.30	20.30
Campfire	21.00	22.00
Lights out	22.30	
<b>Sunday 29th</b>		
Wake	7.00	
BUC staff meeting / breakfast	7.00	8.00
Fruit pickup/delivery final	8.00	9.00
Breakfast in clubs	7.15	8.15
Closing meeting	9.00	10.20
Flag lowering & handover ceremony	10.20	10.30
Club area inspection, sign-out & departure	11.00	17.00



## CONTACTS

British Union Conference Office:	01923 672251
Pastor Dejan Stojkovic:	07919 172176 dejan@adventist.uk
Mrs Natalie Davison:	01923 672251 ndavison@adventist.uk

Once the camp has begun, and in the event of an emergency only, please call: 01923 665534.

## FURTHER INFORMATION

Please note that any revisions to the information in this pack will be send out to the club leaders as soon as possible.

More details will be posted on the [Camporee FAQs page](#) on the website.

[Join us on Facebook](#) for updates from Pastor Dejan. Camporee videos and photos will be posted on Facebook first.

## ADDITIONAL INFORMATION FROM YOU

In order to make the camp as comfortable as possible we need some additional information from you. Please complete the form below and email a copy (of the completed form only, not the entire pack) to [ndavison@adventist.uk](mailto:ndavison@adventist.uk) before 30th June, or you can complete the [form online here](#).

**Club Name:** \_\_\_\_\_

**1. When will you be arriving on site?**

Wednesday 25<sup>th</sup> after 3:00pm ☐ Thursday 26<sup>th</sup> am ☐ Thursday 26<sup>th</sup> pm ☐

**2. Adventurer Bible Experience information:**

Name of Team 1 -

Name of Team Captain –

Name of team members (6 in total) –

Name of substitute –

Name of adult (grader) -

**3. How many in your club will need the use of Disabled Toilet and Shower?**

Number -