

# Friend of Animals



# Who am I?





# Are you a Friend of Animals?







# Requirements



1. Take care of a pet for four weeks.
  - a. Feed it and be certain it has fresh water
  - b. Brush your pet, give it a bath or clean its resting place

**OR**

Put out scraps or seeds for birds or animals in your neighbourhood or school.

- a. Identify creatures that eat these scraps
  - b. Draw and colour pictures of them
2. List creatures that live in your neighbourhood.
  3. Match 10 animals with their houses.
  4. Make an animal mask.
  5. Play an animal game.
  6. Make a stuffed animal. Describe how this animal would be cared for if it were real.

**OR**

Visit one of the following:

- a. zoo
  - d. farmyard
  - b. kennel
  - e. aviary
  - c. museum
  - f. pet shop
7. On what day of creation did God create the animal you cared for.





# Requirement



## QUESTION 1

1. Take care of a pet for 4 weeks.
  - a. Feed it and be certain it has fresh water
  - b. Brush your pet, give it a bath or clean its resting place

OR

Put out scraps or seeds for birds or animals in your neighbourhood or school.

- a. Identify creatures that eat these scraps
- b. Draw and colour pictures of them





# How to take care of an animal?



## 1 – Food





# How to take care of an animal?







# How to take care of an animal?



## 2 – Fresh Water





# How to take care of an animal?

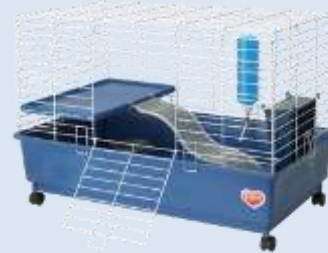




# How to take care of an animal?



## 3 - Shelter





# How to take care of an animal?





# How to take care of an animal?



## 4 - Potty





# How to take care of an animal?



## 5 - Exercise





# How to take care of an animal?





# How to take care of an animal?



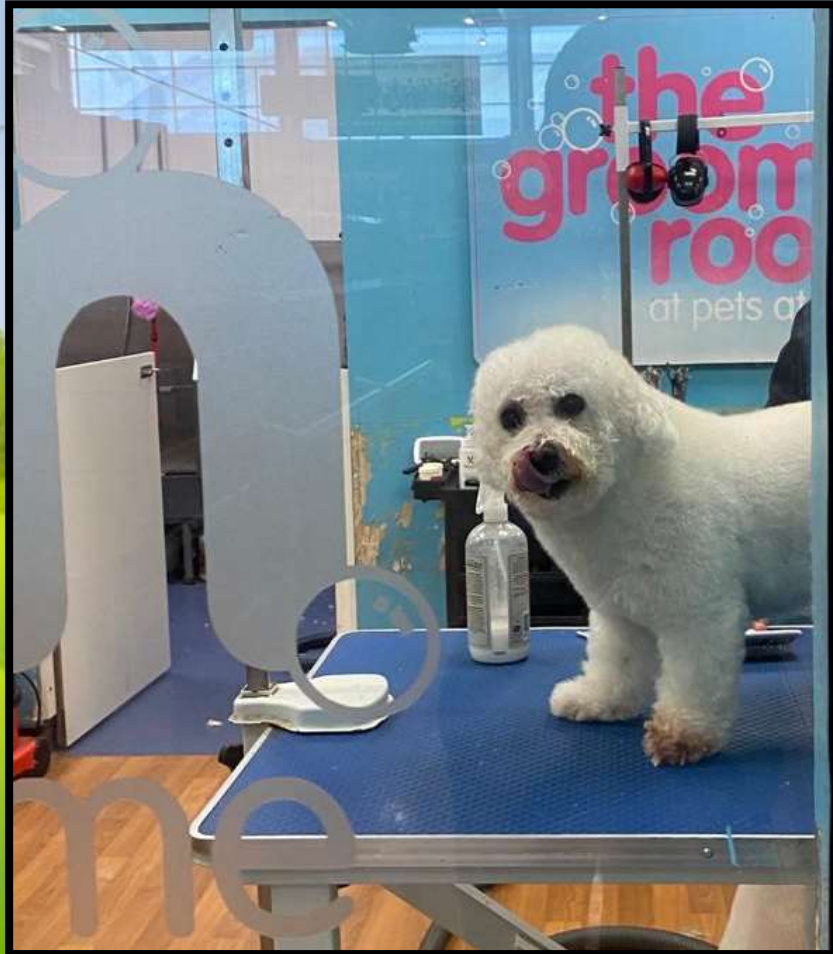
## 6 - Grooming







# How to take care of an animal?



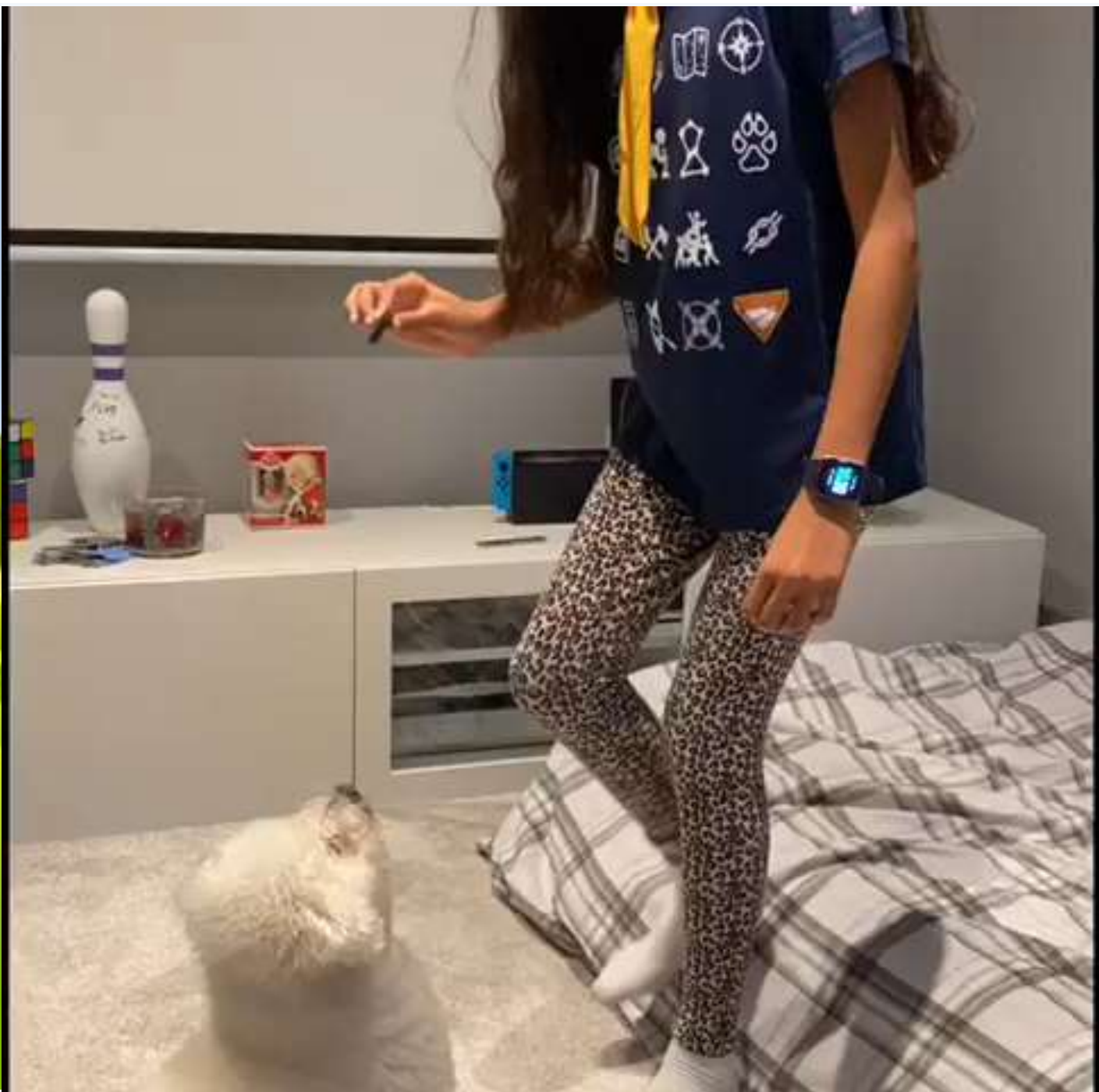


# How to take care of an animal?



## 7 - Training







# How to take care of an animal?



## 8 – Health Care





# How to take care of an animal?



9 - Love





# How to take care of an animal?



10 - Memories





# Requirement



## QUESTION 2

List creatures that live in your neighbourhood.





# Requirement







# Requirement



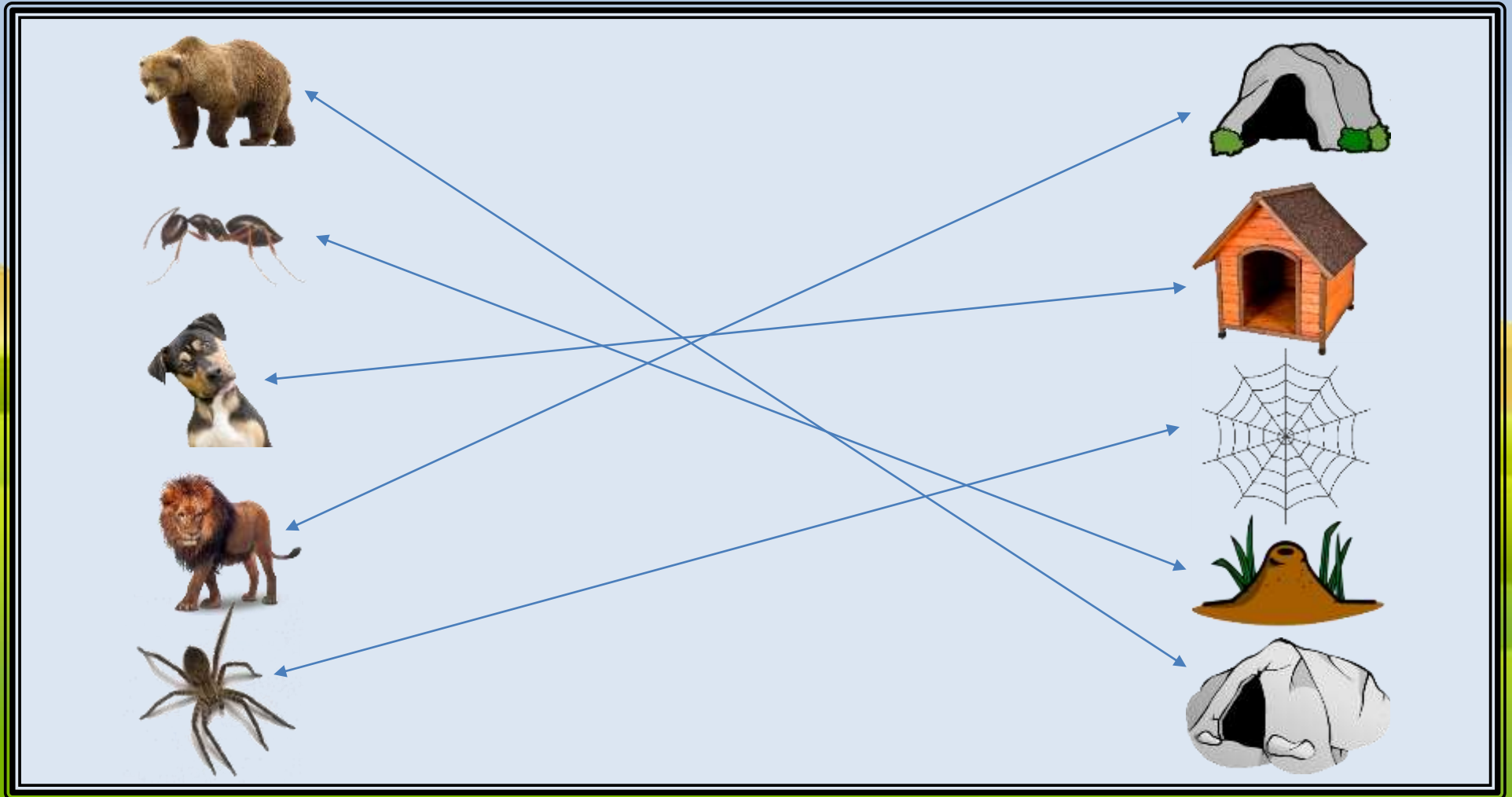
## QUESTION 3

Match 10 animals with their houses.



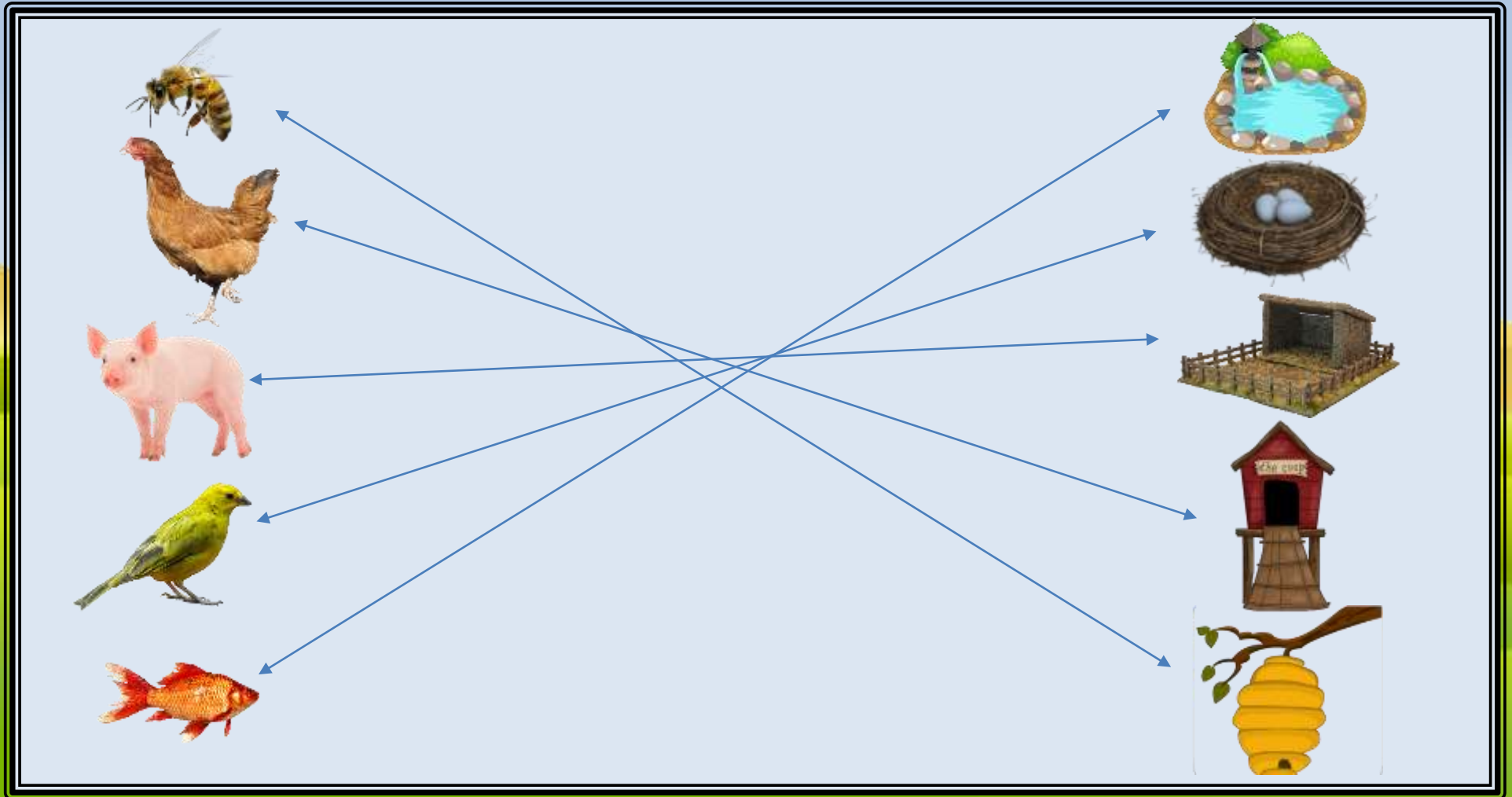


# Requirement





# Requirement





# Requirement



**QUESTION 4**  
Make an animal mask.





# Requirement



## Material



2 Paper Plates



Bottle Cap



Pencil



Pen



Scissors



Stapler



Pipe Cleaners



Paints



Brushes



Jumbo Sticks





# Requirements



## QUESTION 5

Play an Animal Game















# Requirements



## QUESTION 6

Make a stuffed animal. Describe how this animal would be cared for if it were real.

OR

Visit one of the following:

- a. zoo
- b. farmyard
- b. kennel
- e. aviary
- c. museum
- f. pet shop





# Animal Places



Zoo



London Zoo





# Animal Places



## Natural History Museum



NHM London





# Animal Places



## Aviary



London Zoo





# Animal Places



## Kennel



Kingstown Kennels Essex





# Animal Places



## Farmyard



Treginnis Farm - Wales







# Animal Places



## Pet Shop



Pets at Home - Thurrock





# Requirements



## QUESTION 7

On what day of creation did God create the animal you cared for.





# Requirements



**Genesis 1:21-23 and Genesis 1:25/31**

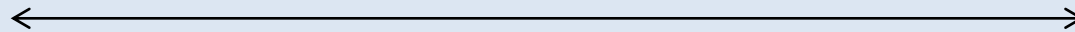


# To Think About:



Those who profess to love God do not always consider that abuse to animals, or suffering brought upon them by neglect, is a sin. The fruits of divine grace will be as truly revealed in men by the manner in which they treat their beasts, as by their service in the house of God. Those who allow themselves to become impatient or enraged with their animals are not Christians.

**The Signs of the Times, p.162**



The conduct of some professed Christians is so lacking in kindness and courtesy that their good is evil spoken.

**The Adventist Home, p.427**





# Friend of Animals

