



# BLOOD & BODY'S DEFENSES



E-HONOUR FOR PATHFINDERS

Name:

Submitted to:

Date:

Signed:

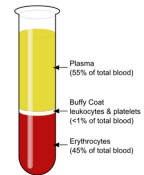
## REQUIREMENTS:

1. HAVE THE MICROSCOPIC HONOUR

2. NAME TWO MAJOR CONSTITUENTS OF BLOOD. WHAT IS THE PERCENTAGE OF EACH IN NORMAL BLOOD?

A. \_\_\_\_\_

B. \_\_\_\_\_



3. WHAT ARE THE 3 TYPES OF BLOOD CELLS? WHAT ARE THEIR FUNCTIONS?

TYPES OF CELLS

FUNCTION

A. \_\_\_\_\_

\_\_\_\_\_

B. \_\_\_\_\_

\_\_\_\_\_

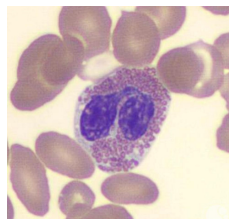
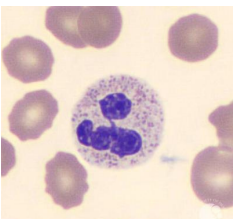
C. \_\_\_\_\_

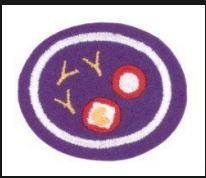
\_\_\_\_\_

4. LABEL THE FOLLOWING WHITE BLOOD CELLS:

A. \_\_\_\_\_

B. \_\_\_\_\_



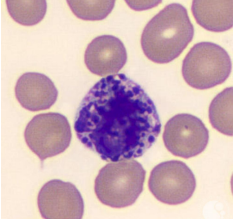


# BLOOD & BODY'S DEFENSES

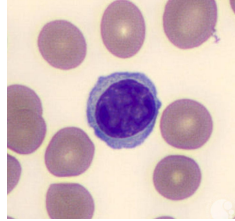


E-HONOUR FOR PATHFINDERS

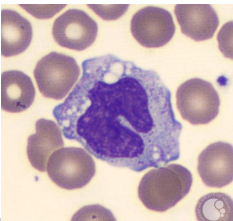
C. \_\_\_\_\_



D. \_\_\_\_\_



E. \_\_\_\_\_



5. OBSERVE STAINED PREPARATION OF HUMAN BLOOD UNDER A MICROSCOPE. COUNT 100 WHITE BLOOD CELLS AND NAME THE MOST COMMON CELL IN A NORMAL ADULT?

\_\_\_\_\_

6. DO AT LEAST ONE OF THE FOLLOWING AND REPORT ON WHAT YOU OBSERVED:

A. OBSERVE BLOOD BEING DRAWN FROM SOMEONE'S ARM BY A MEDICAL PROFESSIONAL

B. VISIT A MEDICAL LABORATORY WHERE BLOOD TESTS ARE PERFORMED

C. VISIT A BLOOD BANK

7. WHAT TWO GASES ARE TRANSPORTED BY THE RED BLOOD CELLS?

A. \_\_\_\_\_

\_\_\_\_\_



# BLOOD & BODY'S DEFENSES

E-HONOUR FOR PATHFINDERS



**B. EXPLAIN WHY BLOOD APPEARS BLUE/GREEN IN YOUR VEINS BUT IF YOU CUT YOURSELF, THE BLOOD THAT COMES OUT IS BRIGHT RED. EXPLAIN WHY A LACK OF IRON IN YOUR DIET MIGHT MAKE YOU HAVE YELLOWISH-COLORED BLOOD.**

.....

.....

.....

.....

.....

**8. EXPLAIN HOW BLOOD CLOTS WHEN YOU ARE INJURED. HOW DOES TYPICAL "FIRST AID" HELP IN THIS PROCESS?**

.....

.....

.....

.....

**9. WHAT DOES IT MEAN TO BE A BLOOD DONOR?**

.....

.....

.....

**A. WHAT IS YOUR OWN BLOOD TYPE?**

.....

**B. WHAT TYPES OF BLOOD CAN BE DONATED TO YOU?**

.....

.....

.....

**C. WHICH BLOOD TYPES CANNOT BE DONATED TO YOU? WHY?**

.....

.....

.....



# BLOOD & BODY'S DEFENSES

E-HONOUR FOR PATHFINDERS



**10. TELL TWO STORIES IN THE BIBLE IN WHICH BLOOD IS INVOLVED. FROM WHAT YOU KNOW ABOUT BLOOD, WHY DO YOU THINK THAT THE BIBLE USES BLOOD AS A SYMBOL OF GOD'S SAVING POWER?**

.....

.....

.....

.....

.....

**11. LIST 10 SPECIFIC HEALTH HABITS THAT CAN HELP YOUR BODY STAY HEALTHY AND FIGHT OFF INFECTION. FIND A REFERENCE FROM THE SPIRIT OF PROPHECY THAT SUPPORTS EACH ONE OF THESE. KEEP A RECORD FOR THREE WEEKS OF HOW OFTEN YOU REPEAT THESE 10 HABITS.**

**A.** .....

.....

**B.** .....

.....

**C.** .....

.....

**D.** .....

.....

**E.** .....

.....

**F.** .....

.....

**G.** .....

.....

**H.** .....

.....

**I.** .....

.....

**J.** .....

.....





# BLOOD & BODY'S DEFENSES



## E-HONOUR FOR PATHFINDERS

12. DEFINE THE FOLLOWING TERMS RELATING TO THE BODY'S DEFENSES:

A. IMMUNOLOGY

---

B. PATHOGEN INFLAMMATION

---

C. ANTIBODY

---

D. MEMORY CELLS

---

E. IMMUNITY

---

F. VACCINE

---

G. ALLERGY

---

H. HISTAMINE

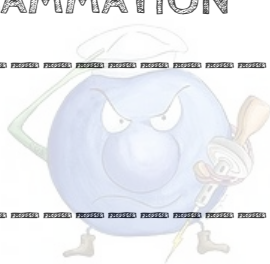
---

I. HISTAMINE

---

J. ANTIHISTAMINE

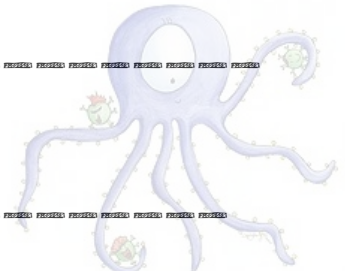
---



Cytotoxic T Cell



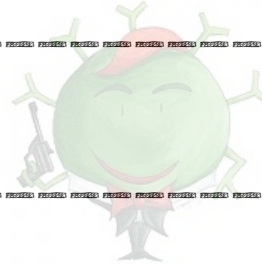
Helper T Cell



Follicular Dendritic Cell



Treg



B Cell



Plasma Cell



Basophil



Neutrophil



Eosinophil



# BLOOD & BODY'S DEFENSES

E-HONOUR FOR PATHFINDERS



13. POISON IVY AND POISON OAK ARE PLANTS COMMONLY ENCOUNTERED BY ACTIVE PATHFINDERS. BE ABLE TO IDENTIFY POISON IVY AND POISON OAK AND KNOW HOW TO AVOID HAVING ALLERGIC REACTIONS TO THEM, AND EXPLAIN WHAT TO DO IF YOU GET AN ALLERGIC REACTION TO EITHER.

.....

.....

.....

.....

.....

14. MAKE A LIST OF AS MANY AS POSSIBLE OF THE INFECTIOUS DISEASES THAT YOU HAVE HAD. WHICH ONES ARE YOU NOW IMMUNE TO? EXPLAIN WHY OR WHY NOT.

DISEASE	IMMUNITY (YES/NO)	WHY OR WHY NOT?
---------	-------------------	-----------------

A. ....

B. ....

C. ....

15. FROM YOUR PERSONAL MEDICAL RECORDS, LIST ALL THE VACCINES THAT YOU HAVE HAD AND DETERMINE FROM YOUR DOCTOR WHEN YOUR NEXT VACCINATION SHOULD BE.

A. ....

B. ....

C. ....

D. ....

E. ....



# BLOOD & BODY'S DEFENSES

E-HONOUR FOR PATHFINDERS



**16. WHAT IS COVID-19? HOW IS IT SPREAD? IS THERE A CURE? WHY IS IT SO DEVASTATING? (AT LEAST 250 WORDS).**

Handwriting practice lines consisting of a series of horizontal lines with the word 'Pencil' repeated on each line. A large, semi-transparent image of a coronavirus particle is overlaid on the page, centered behind the writing lines. A small blue icon of a pen and paper is located in the bottom right corner of the writing area.



# BLOOD & BODY'S DEFENSES

E-HONOUR FOR PATHFINDERS



17. FIND THREE BIBLICAL REFERENCES THAT HAVE TO DO WITH CLEANLINESS AND THE CONTROL OF OR SPREAD OF DISEASE

A. \_\_\_\_\_  
\_\_\_\_\_

B. \_\_\_\_\_  
\_\_\_\_\_

C. \_\_\_\_\_  
\_\_\_\_\_