

Friend of Nature Adventurer Award

Alberto Francis



Requirements

1. Explain:

- How to become a friend of nature
- How to pick flowers and when it is allowed
- How to protect trees, nest, etc

2. List the names of three different trees and do a bark rubbing of each.

3. Collect four different kinds of leaves and compare them.

Requirements cont.

4. Do one of the following:

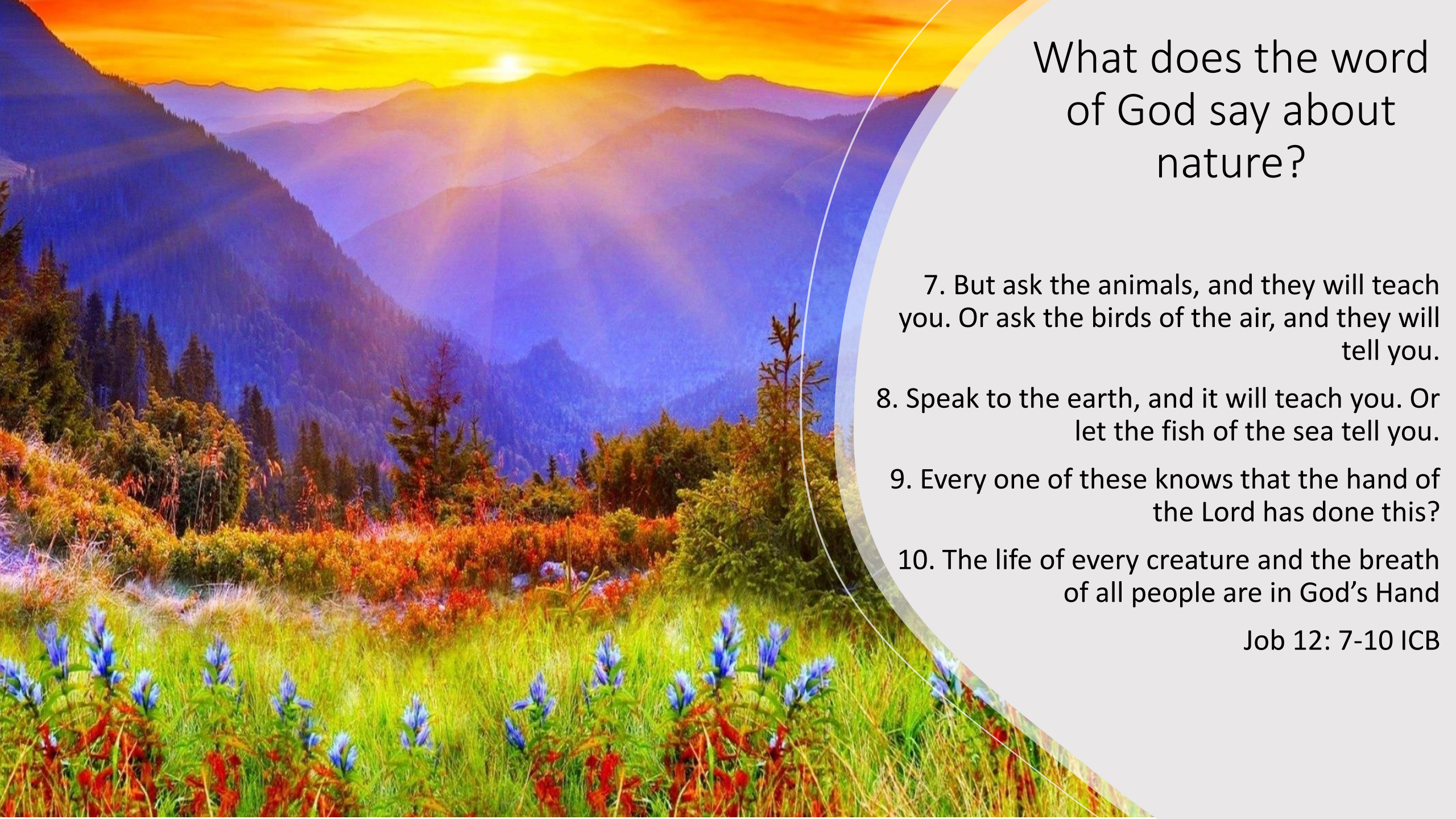
- A. Explore (or observe with a magnifying glass) all the things you can see in a 10 square-foot area
- B. Explore a yard or park and talk about what you see

5. Do one of the following:

- A. Take a nature walk and collect items of interest.
 - Show or tell about the items you found
 - Make them into a collage or poster
- B. Visit one of the following and tell what you saw:
 - Zoo
 - Park
 - Wildlife area

6. Grow one plant or bulb and make drawings of it at three different stages of its growth.

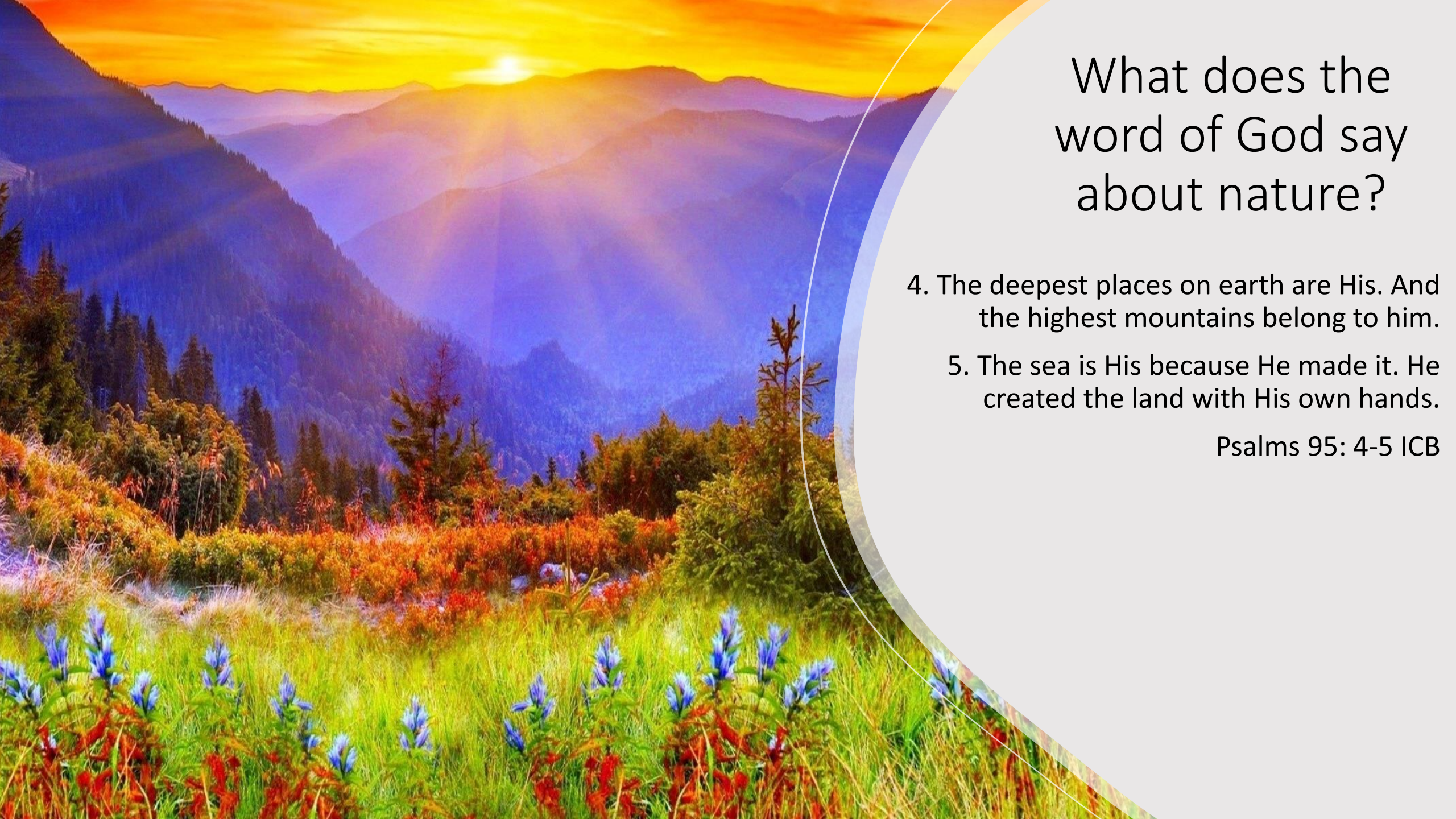




What does the word of God say about nature?

7. But ask the animals, and they will teach you. Or ask the birds of the air, and they will tell you.
8. Speak to the earth, and it will teach you. Or let the fish of the sea tell you.
9. Every one of these knows that the hand of the Lord has done this?
10. The life of every creature and the breath of all people are in God's Hand

Job 12: 7-10 ICB



What does the word of God say about nature?

4. The deepest places on earth are His. And the highest mountains belong to him.
5. The sea is His because He made it. He created the land with His own hands.

Psalms 95: 4-5 ICB




What does the word of God say about nature?

The Nature Story
Genesis chapter 1

Everything God made was in perfect order

'This was Good'



Try and see if you
can match the
creation to the
day it was
created.

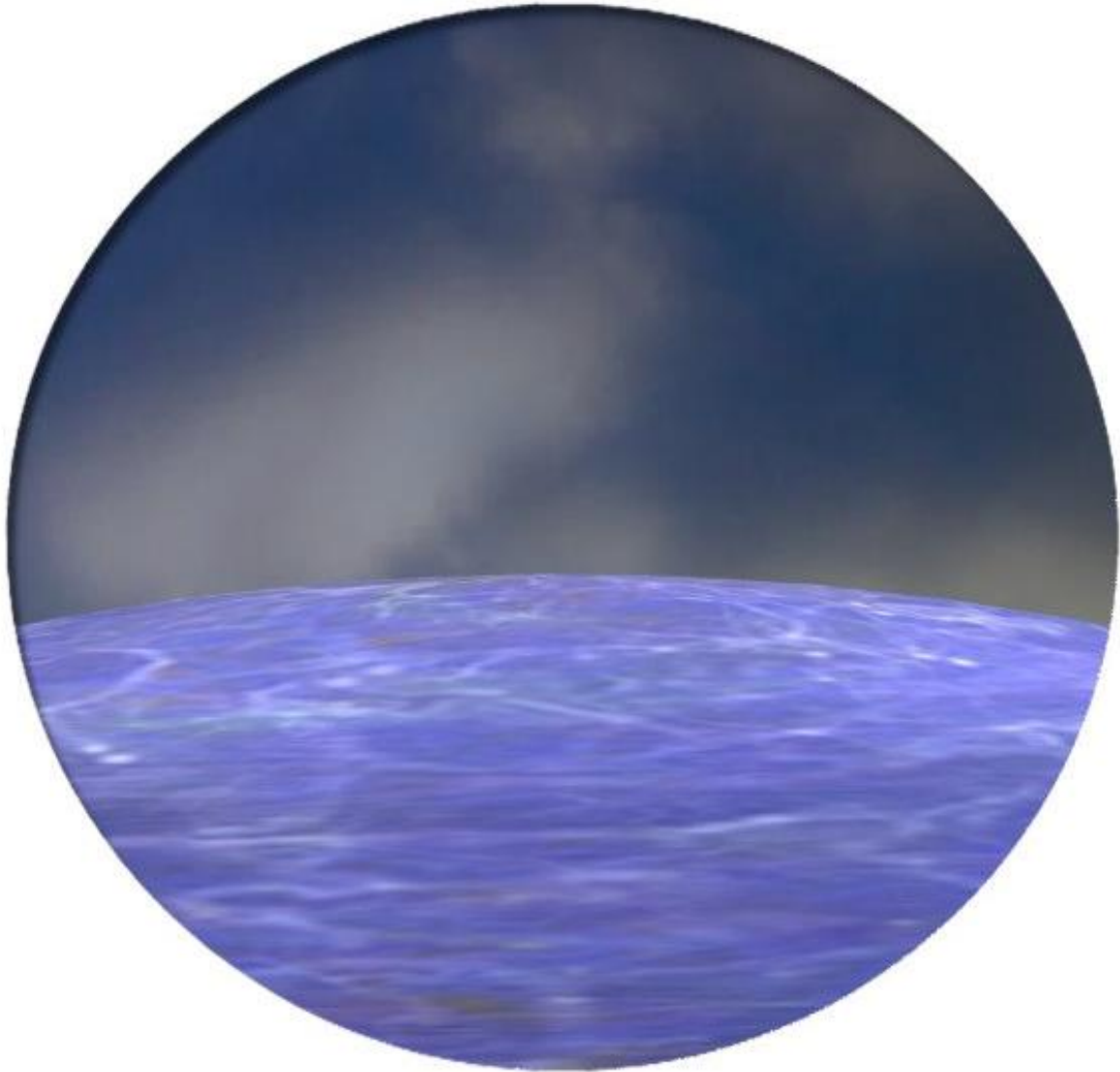
Story of Creation

Day 1



LIGHT

Day 2



SKY & SEA

Day 3



DRY LAND &
PLANTS

Day 4



SUN, MOON &
STARS

Day 5

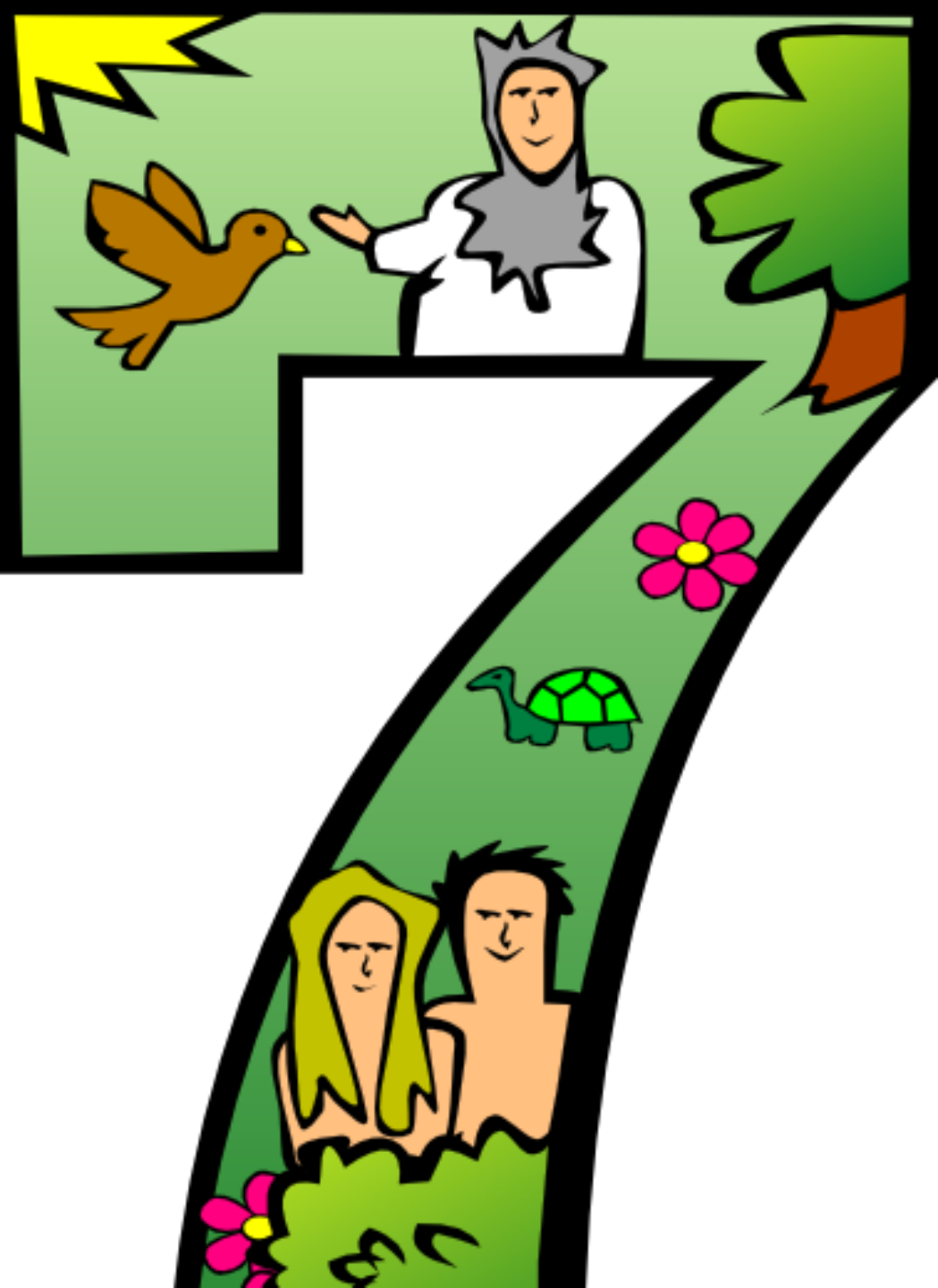


FLYING ANIMALS
& FISH

Day 6



LAND ANIMALS
AND MANKIND



REST

**Guess
Who!**

The logo for the board game 'Guess Who!' is centered within a white circle on a light green background. The text 'Guess Who!' is written in a bold, red, bubbly font with a thick blue outline. The letter 'o' in 'Who!' is stylized as a red question mark with a small cartoon face on top. A registered trademark symbol (®) is located to the right of the question mark.

A BEAR !!

I SLEEP DURING WINTER

I'M AN OMNIVOR, SO I
EAT ANYTHING

IM BIG AND FURY

DAVID STOPPED ME
FROM EATING HIS SHEEP



A LEOPARD !!



I AM PART OF THE CAT
FAMILY

I DO MOST OF MY
HUNTING AT NIGHT

I HAVE LARGE SPOTS ALL
OVER MY BODY

I OFTEN GET MISTAKEN
FOR A CHEETAH

AN ANT !!



I CAN LIFT SOMETIMES
MORE THAN 20X MY BODY
WEIGHT

I DON'T HAVE EARS

MY HABITAT IS OFTEN
CALLED A COLONY

GO TO THE _____, THOU
SLUGGARD; CONSIDER HER
WAYS, AND BE WISE

A FISH !!



I AM IN THE SONG "THE
SEA OF GALILEE"

JESUS TURNED 2 OF ME
INTO ENOUGH TO FEED
5,000

I HAVE GILLS

I LIVE UNDERWATER

Requirement 1

Explain:

1. How to become a friend of nature
2. How to pick flowers and when is it allowed?
3. How to protect trees, nests etc



**Take nothing but memories,
leave nothing but footprints!**

Chief Seattle



How to become a friend to nature?

- Discover
- Explore
- Make memories
- Enjoy nature
- Keep it clean

Remember God has tasked us to look after His creation.

A young girl with blonde hair, wearing a pink vest over a white shirt and blue pants, is crouching in a field of green grass and yellow dandelions. She is holding a large bouquet of yellow dandelions in her left hand and reaching for another one with her right hand. The background is a vast field of similar flowers under a soft, natural light.

How to pick flowers and
when is it allowed?

DOs



DOs



DON'Ts

At home:

- Best to pick flowers either early in morning or in the evening
- Pick/Cut flowers that are coming into bloom
- Cut flowers stems at an angle
- Place in water straight away





Examples of buds

DON'Ts

In the wild:

- Be CAREFUL WHERE YOU PICK. Avoid picking flowers in your local parks or on private land.
- Don't take too many flowers. You are allowed to pick flowers that are in abundance **BUT** only take 1 or 2.
- Don't dig up flowers from their roots.



DOs



DON'Ts





You can pick flowers when they are ready to bloom by using garden clippers.





- Recycle Paper (stop printing)
- Go online
- Place bird feeders
- Putting rubbish in the bin
- Walk or cycle
- Create a bug hotel
- Plant flowers, trees, or bushes

Requirement 2

List the names of 3 different trees and do a bark rubbing.



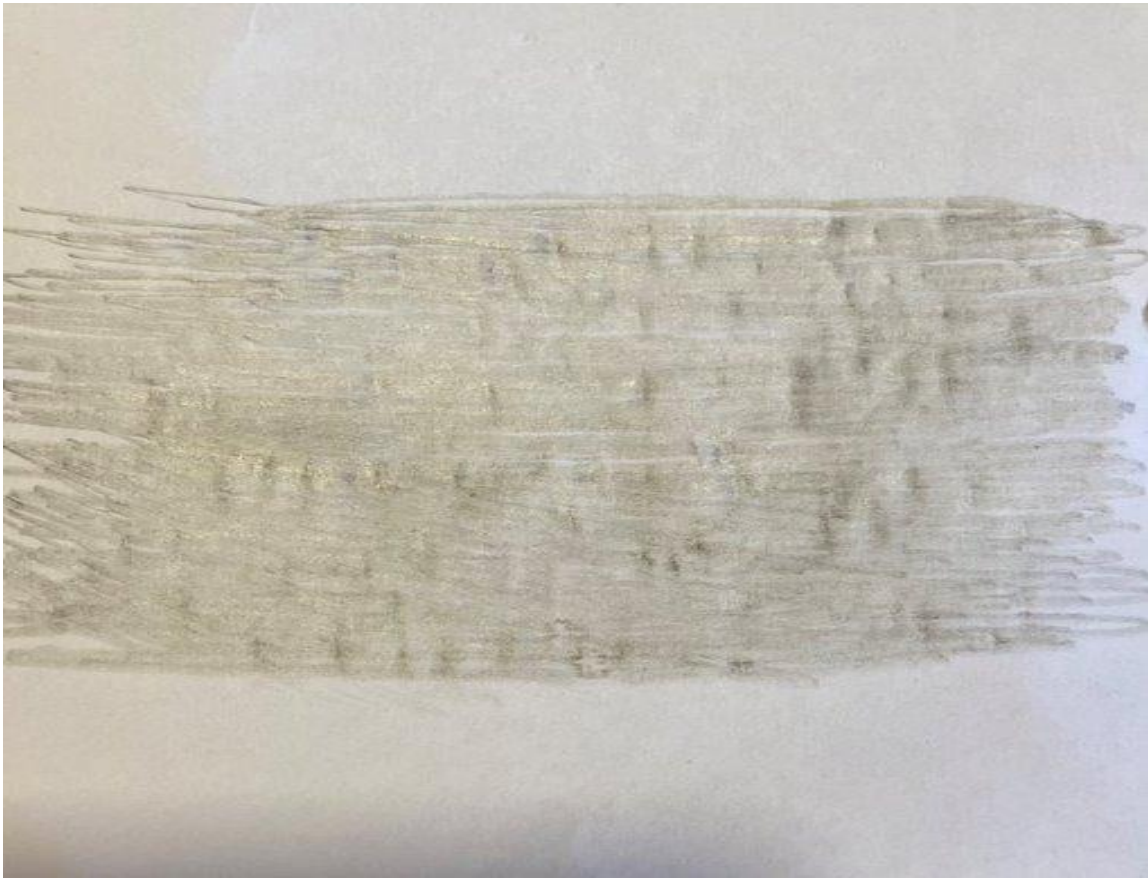
London Plane Tree



Yellow Poplar Tree



White Birch Tree



Requirement 3

Collect 4 different types of leaves and compare them.

Leaf 1



Leaf 2



Leaf 3



Leaf 4



Requirement 4

Do one of the following:

- A. Explore (or observe with a magnifying glass) all the things you can see in a 10 square-foot / 1m sq area
- B. Explore a garden or park and talk about what you see



Requirement 5

Do one of the following:

A. Take a nature walk and collect items of interest.

- i. Show or tell about the items you found
- ii. Make them into a collage or poster

Or

B. Visit one of the following and tell what you saw:

- i. Zoo
- ii. Park
- iii. Wildlife area

Nature Walk Bag



Requirement 6

Grow one plant or bulb and make drawings of it at three different stages of its growth.



Recycling Pledge Card

[earth day coloring in pledge.png \(764x989\)](#)
[\(purplesplashstudios.com\)](#)

My Pledge to Earth:



Name: _____ Date: _____

Create a bug Hotel

