



# Sign Language Award

presented by Jessica Perea



# Requirements

1. Learn the manual alphabet used by the deaf and the rules pertaining to it.
2. Learn how to send and receive words using the manual alphabet.
3. Learn at least fifty words.
4. Learn and present at least one simple Christian song.
5. Sign a simple Bible verse.
6. Meet a deaf person and sign with them.





# Who uses Sign Language?

-Deaf

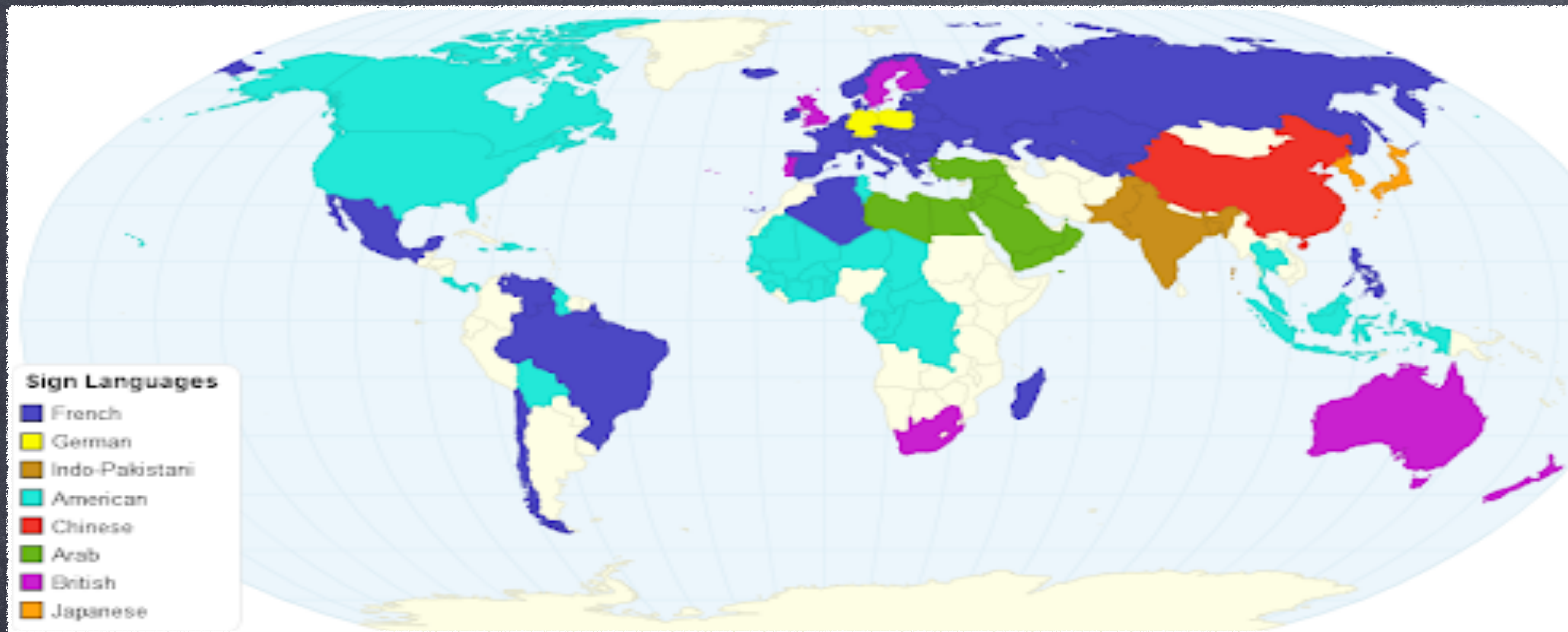
-Hard of Hearing

-people with a speech  
disability, such as mute

-anyone







Quick Note:

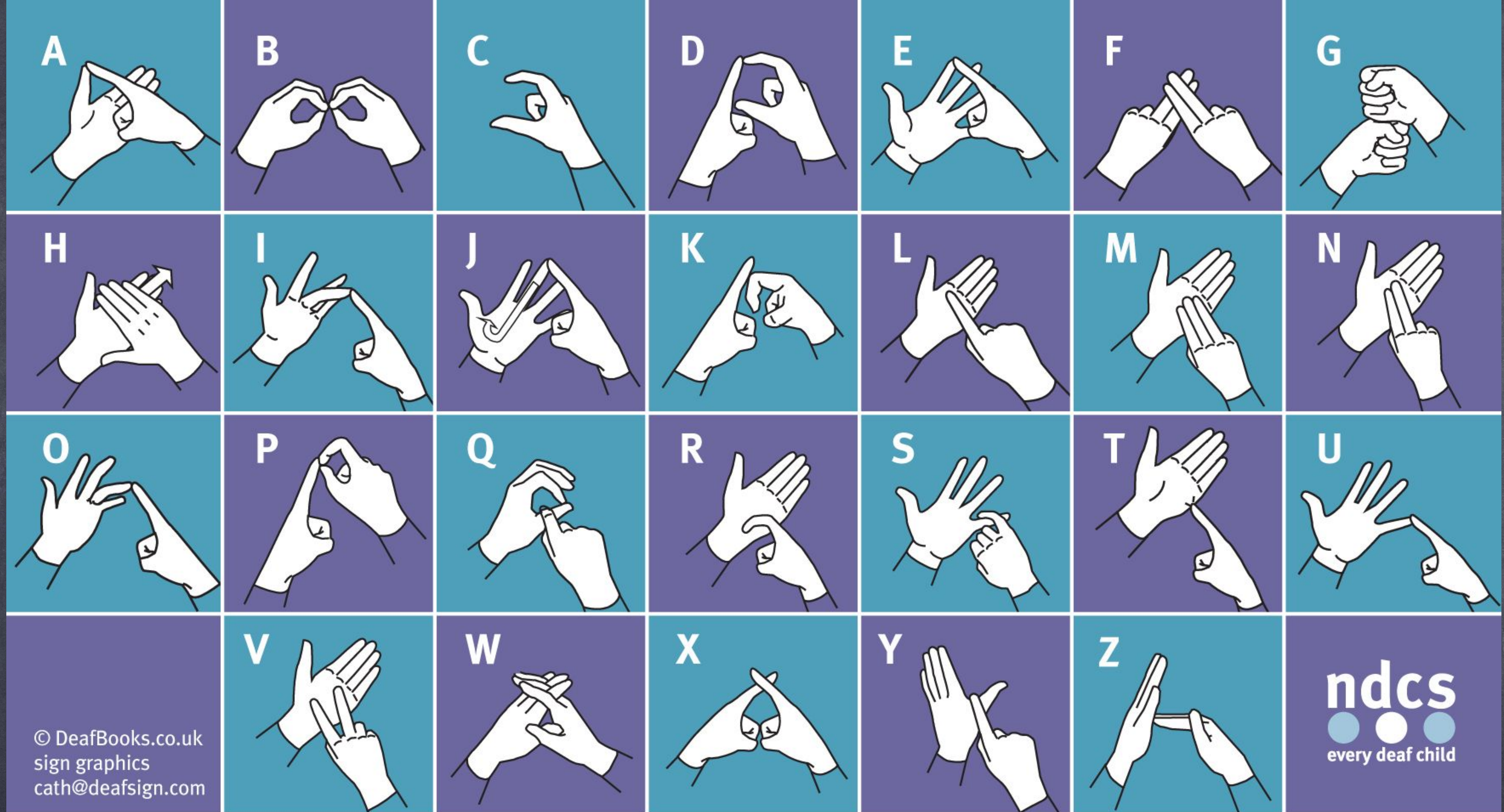
Many different sign languages used around the world.



# Requirement 1

Learn the manual alphabet used by the deaf,  
and the rules pertaining to it.





## The British fingerspelling alphabet

Get practising, get sponsored and join the NDCS Fingerspellathon at [www.ndcs.org.uk/fingerspell](http://www.ndcs.org.uk/fingerspell)

fingerspellathon



# British two-handed fingerspelling



A



B



C



D



E



F



G



H



I



J



K



L



M



N



O



P



Q



R



S



T



U



BRITISH DEAF ASSOCIATION



V



W



X



Y



Z



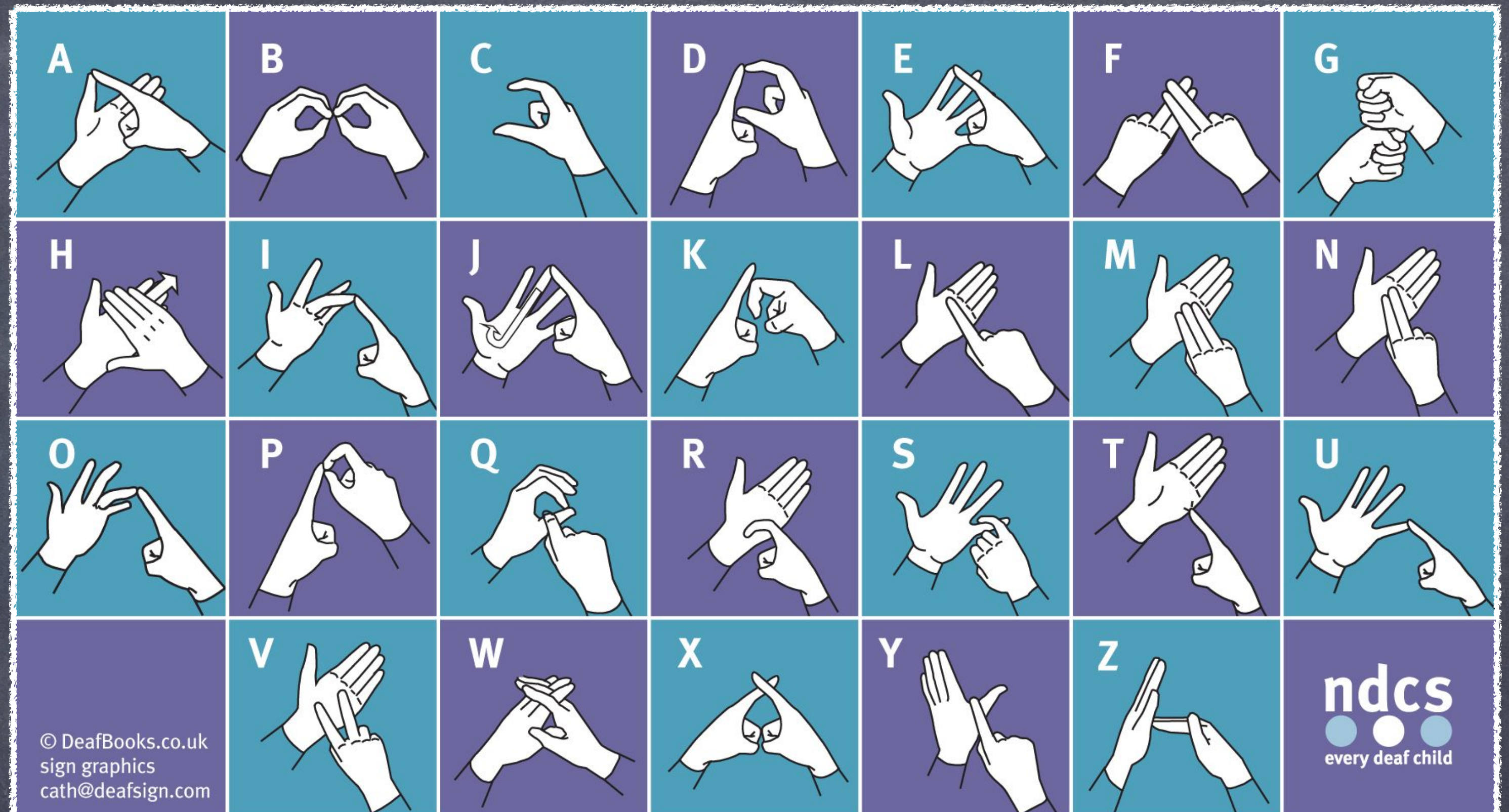
# Requirement 2

Learn how to send and receive words using  
the manual alphabet.



# Let's Spell

- back
- mug
- friend
- quilt
- dizzy
- xray
- Jesus
- worship



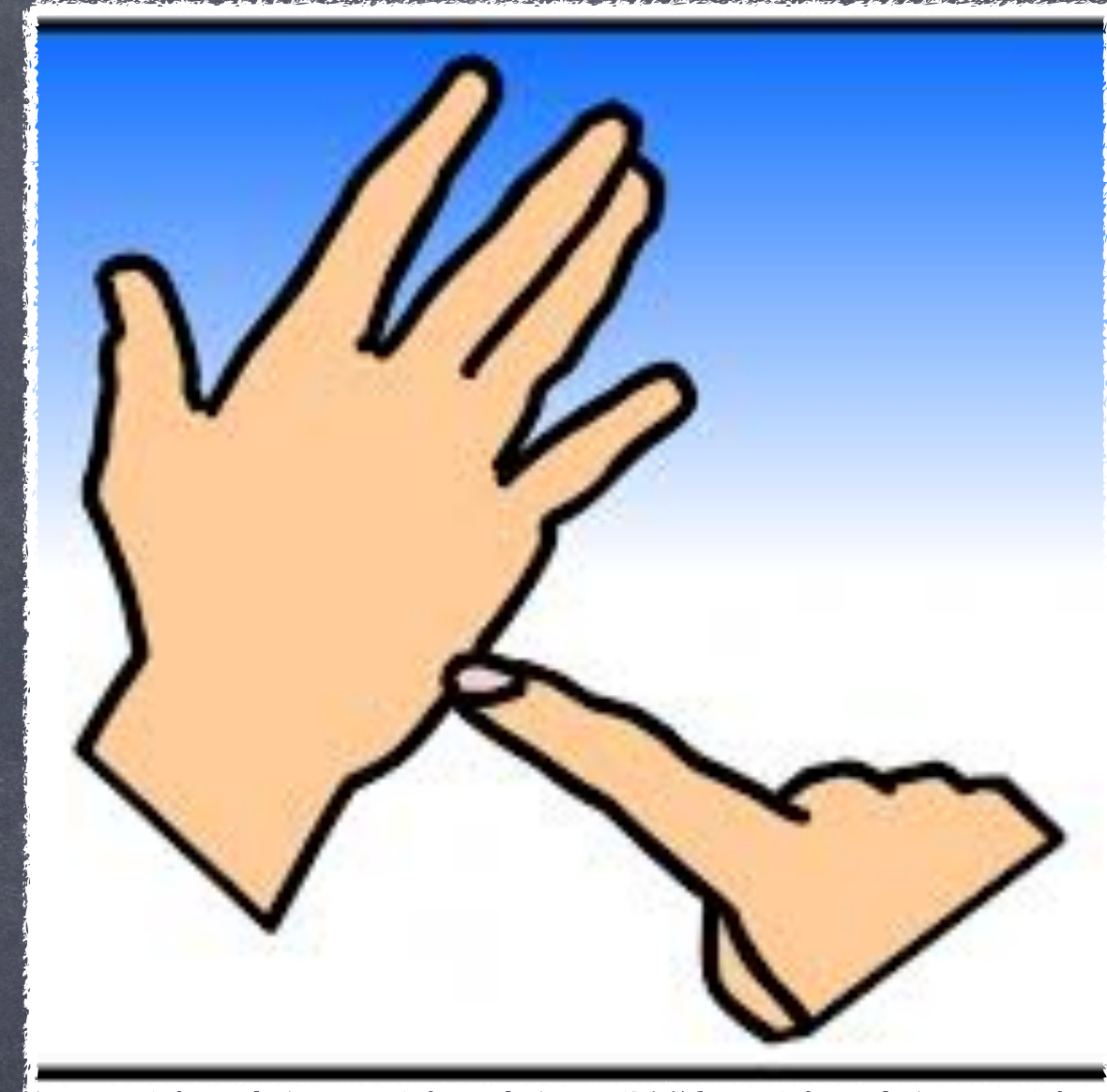
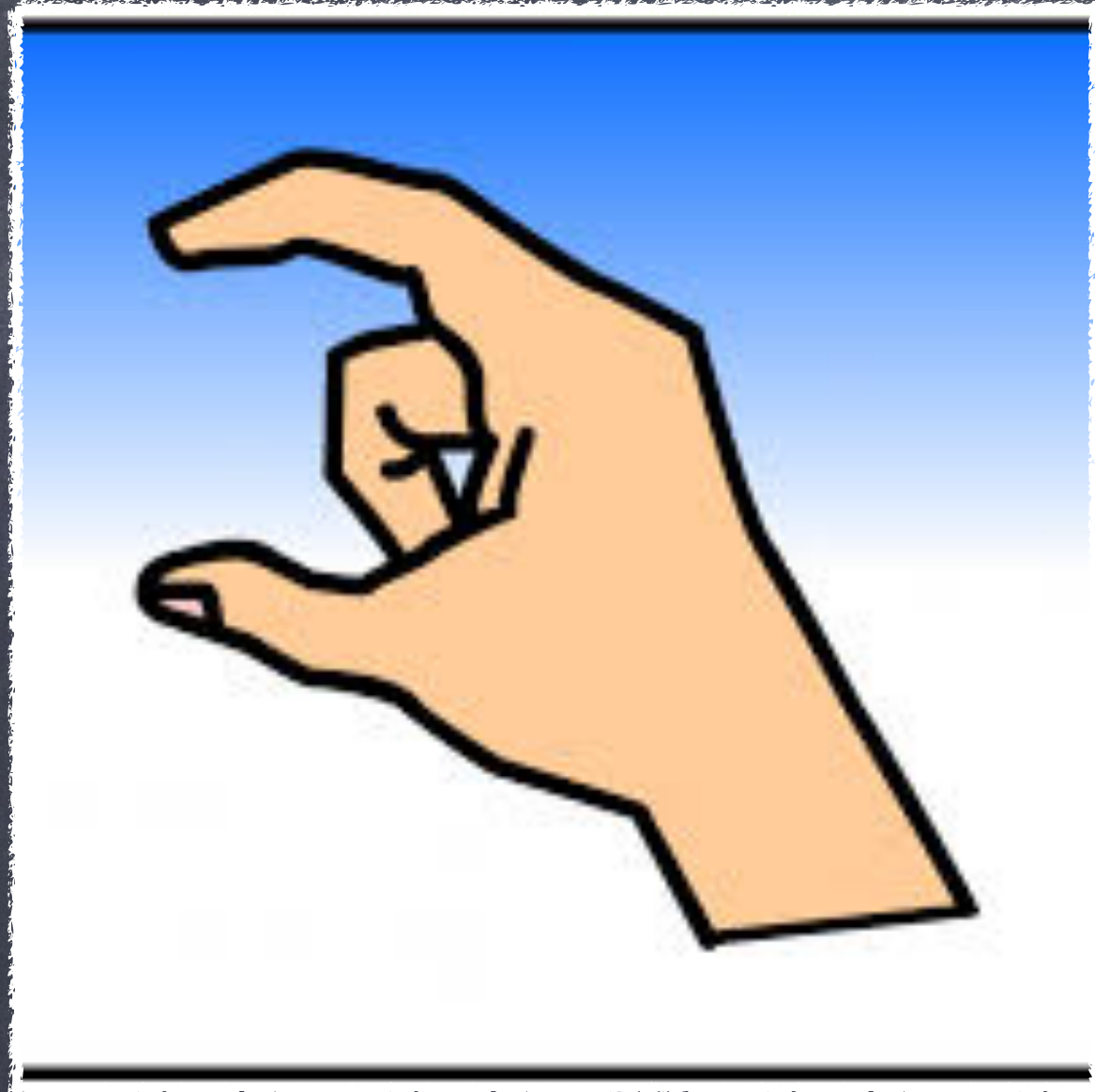
## The British fingerspelling alphabet

Get practising, get sponsored and join the NDCS Fingerspellathon at [www.ndcs.org.uk/fingerspell](http://www.ndcs.org.uk/fingerspell)

fingerspellathon



# Let's Spell Together



Type or write down what word you think is being spelled.



CAT

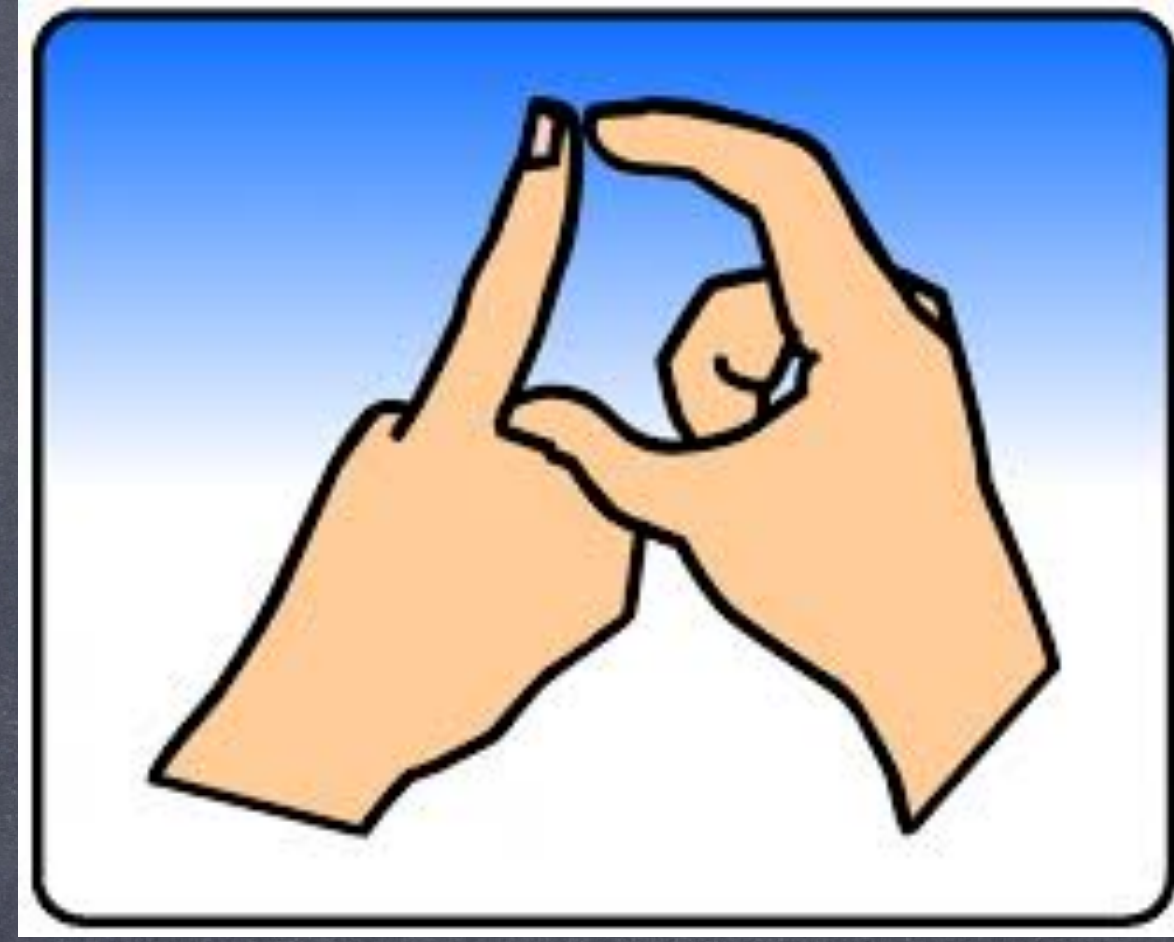
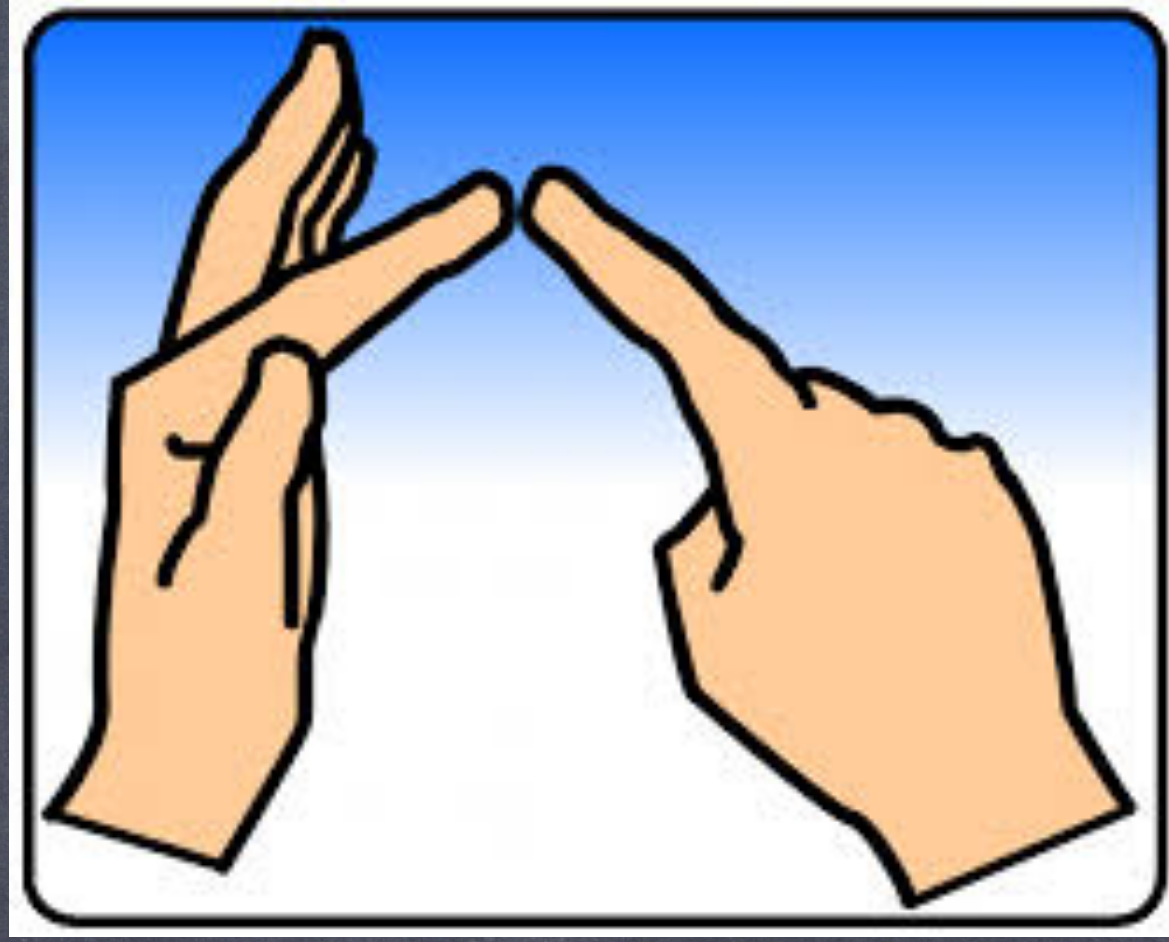
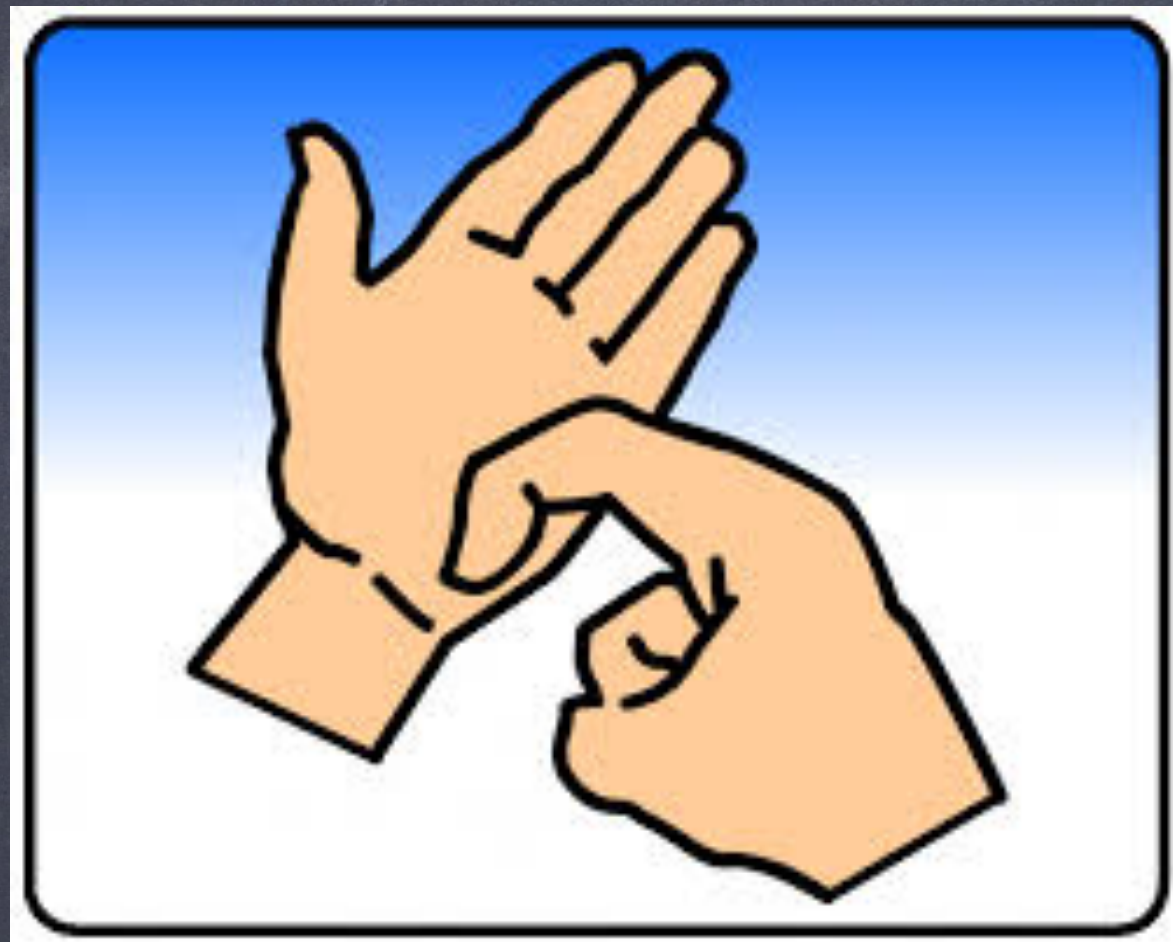


**CAT**

*Both hands open with fingers apart and slightly bent. Hands start at each side of face and make a short outwards movement.*



# Let's Spell Together



Type or write down what word you think is being spelled.



RED



# SING A RAINBOW



Red and yellow and pink and green, purple



and orange and blue. I can sing



a rainbow, sing a rainbow, sing a rainbow too.





WORDS

-- CAT -- DOG -- BIRD -- TURTLE -- ZOO --

Create your own BSL fingerspelling word search puzzles online at  
[www.signlanguageforum.com/bsl/](http://www.signlanguageforum.com/bsl/)

# British Sign Language Fingerspelling Challenge

Practice & improve your BSL fingerspelling receptive skills with this 2 minute fingerspelling challenge. How many fingerspelling words can you read in 2 minutes?

A screenshot of the BSL Fingerspelling Challenge game interface. At the top, a blue header shows a trophy icon with '0', a rabbit icon, a 'FAST&gt;&gt;' button, and a timer at '1:27'. The main area is white and contains a large illustration of a hand in a BSL fingerspelling gesture. At the bottom, a blue footer contains a refresh icon, a search bar, and a right-pointing arrow icon.

# Fingerspelling Games

[www.signlanguageforum.com/bsl/](http://www.signlanguageforum.com/bsl/)

<https://www.signlanguageforum.com/bsl/fingerspelling/fingerspelling-game/>



# Requirement 3

Learn at least 50 words



# Learn 50 words

1. Greetings

2. Family

3. Colours

4. Feelings

5. Food

6. School

7. Clothes

8. Verbs

9. Polite Words

10. Questions



# British Sign Language Dictionary

Search and compare thousands of words and phrases in British Sign Language (BSL). The largest collection of video signs online.



## Recently searched words

mitt  
eating  
sixth  
mixer  
summer

pyjamas  
possible  
can  
miserable  
mischievous

whale  
pothouse  
taphouse  
I Like  
model (object)

slag code  
model (prototype)  
still  
relaxed  
slang

fibre  
heard  
fiber optic cable  
blowball  
glad

now  
blouse  
feminism  
Are you OK?  
feminist movement

## Popular signs today

Linux  
How Are You?  
tired  
happy  
and

want  
divide  
learn  
yesterday  
help

language  
pain  
strawberry  
toilet  
like

you're welcome  
week  
best  
name  
park

crabbed  
know  
feel  
out  
yes

world  
have  
more  
good morning  
What

# Video Dictionary

signbsl.com





## 21 vocabulary videos, chosen at random from over 1000

Use Search or Categories to find specific signs

### Sabbath



A British Sign Language (BSL) translation of Sabbath. The day of rest and holiness in Judaism, beginning at sunset each Friday.

[Provide feedback](#) about this translation, word, phrase, or definition. Was this translation useful, are you able to help [support us](#)?

### Sacred Tradition / Holy Tradition



A British Sign Language (BSL) translation of Sacred Tradition / Holy Tradition. From the Latin 'tradere' meaning 'to hand on', this refers to beliefs and practices received from Jesus by the apostles and handed on from one generation of Christians to the next.

### Scholar



A British Sign Language (BSL) translation of Scholar. An academic or those who devote themselves to study.

[Provide feedback](#) about this translation, word, phrase, or definition. Was this translation useful, are you able to help [support us](#)?

# Christian Dictionary

[christianbsl.com](http://christianbsl.com)

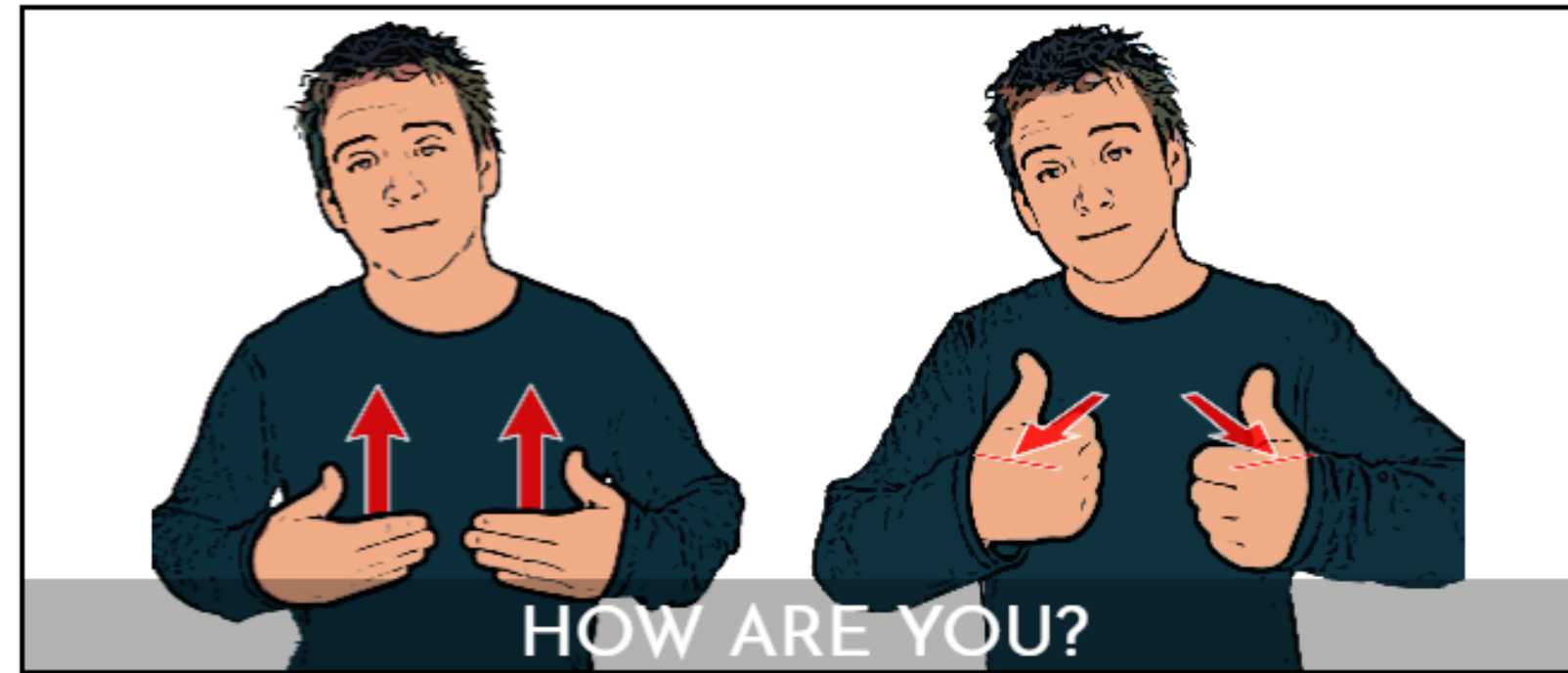




HI



HI



HOW ARE YOU?



GOOD

# BSL GREETINGS



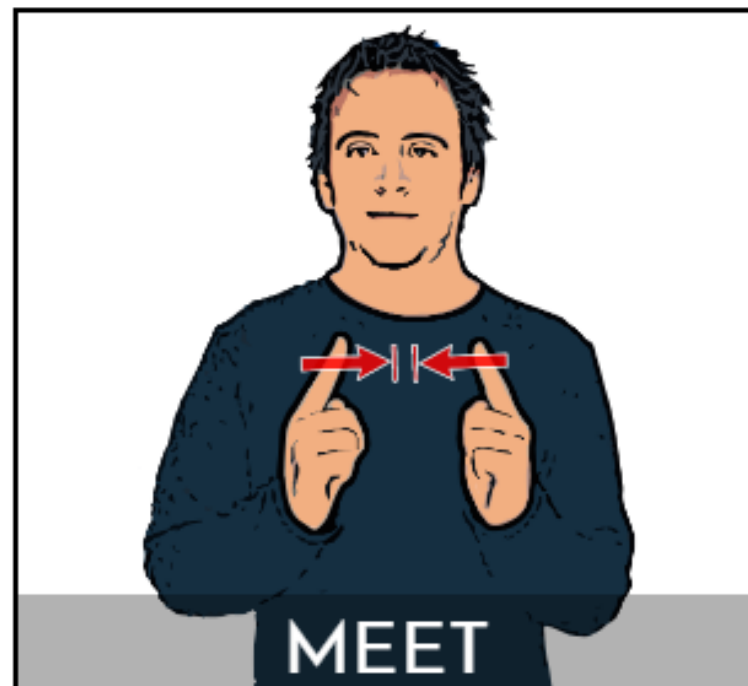
CREATED AT  
british-sign.co.uk



THANK YOU



NICE



MEET



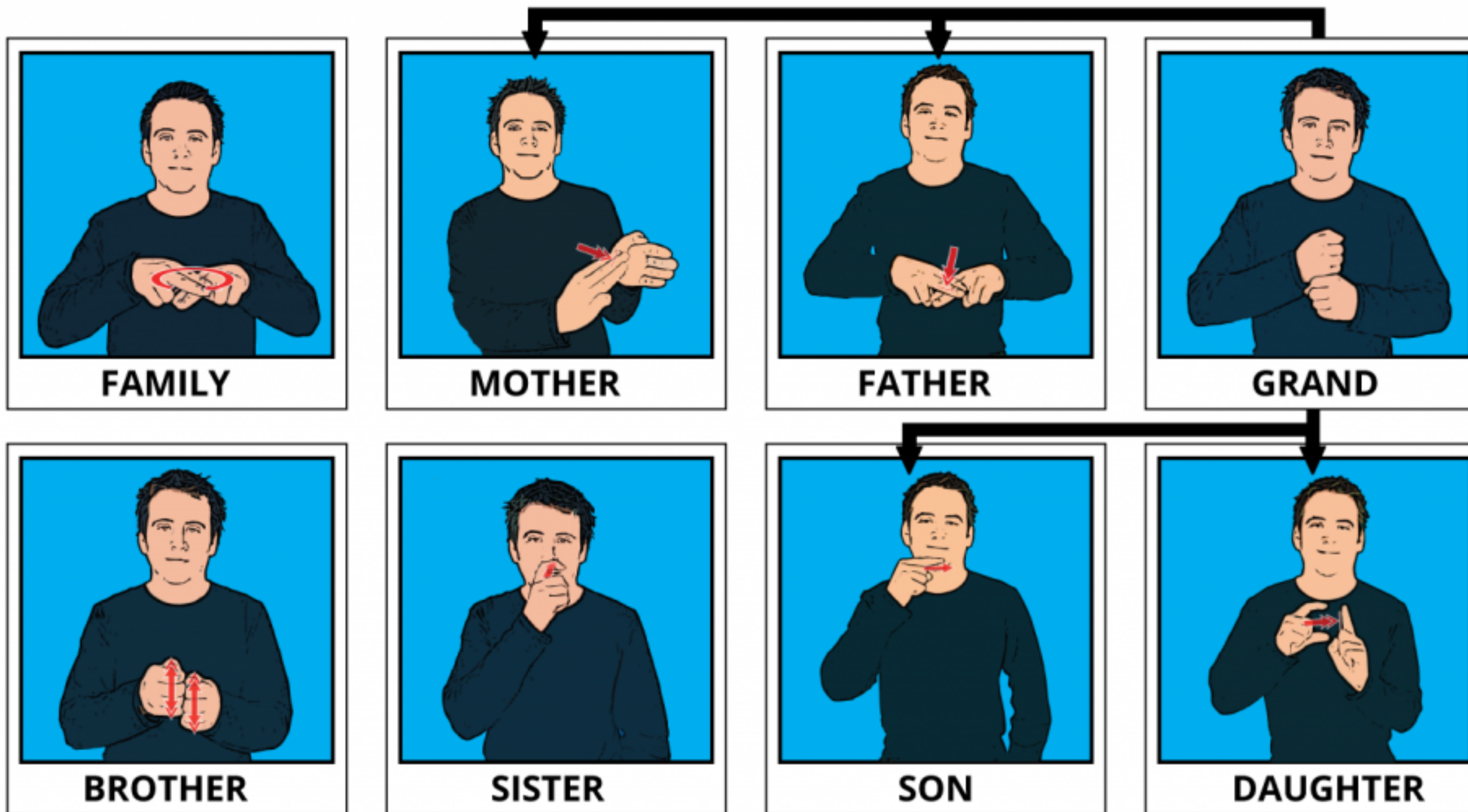
YOU



GOODBYE

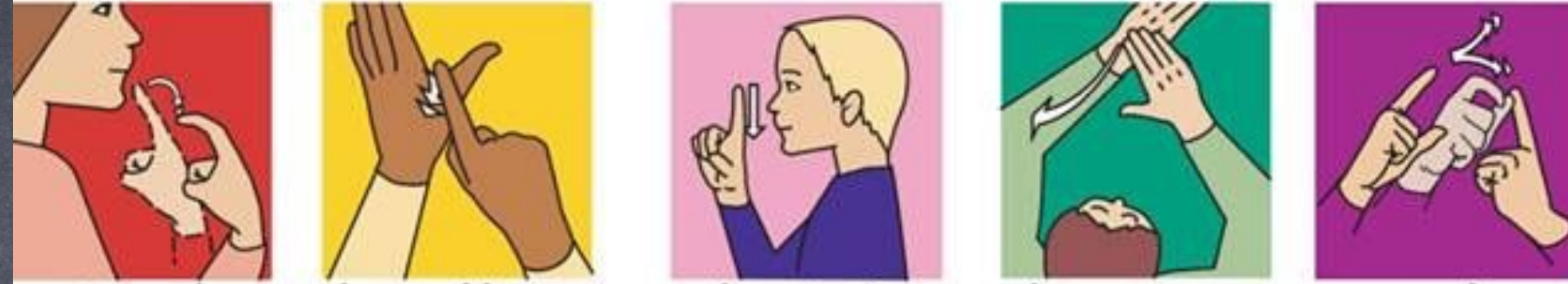


# BRITISH SIGN LANGUAGE - FAMILY

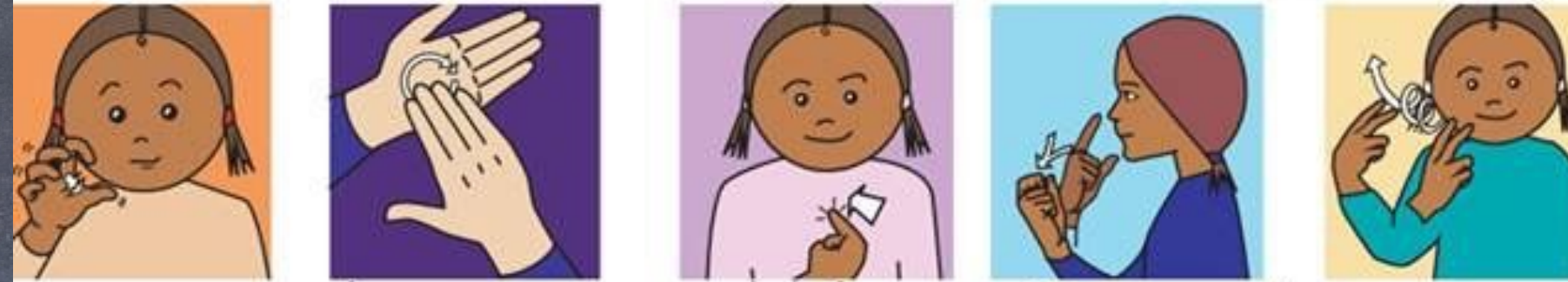




# SING A RAINBOW



Red and yellow and pink and green, purple



and orange and blue. I can sing



a rainbow, sing a rainbow, sing a rainbow too.



Listen with your eyes, (rep) and sing



everything you see....you can



sing a rainbow, (rep) sing along with me



### BORED



Working flat hand (palm back, pointing up), fingers tap chin twice.

### EXCITED



Clawed hands (palms back, pointing in) against upper chest, alternately move rapidly up and down while maintaining contact with chest.

### SHOCKED



Open hands (palms back, pointing in) resting against chest, move firmly forwards. Use appropriate facial expression.

### TIRED



Working open hand (palm down, pointing forwards) with thumb resting against upper chest, arcs over to palm up, pointing forwards at waist height, shoulders slump.

### WORRIED



Index hands (palms back, pointing up) at either side of forehead, make short alternate movements backwards and forwards.



### AFRAID



Working clawed hand (palm back, pointing in/up) quivers over heart. Shoulders hunch, body shrinks back.

# HOW ARE YOU FEELING?

### ANGRY



Clawed hands (palms in, pointing forward) at waist height, move up and down alternately with emphasis.



© The SIGNALONG Group  
[www.signalong.org.uk](http://www.signalong.org.uk)  
E-mail : [info@signalong.org.uk](mailto:info@signalong.org.uk)

### HAPPY



Working cupped hand strikes twice across supporting palm moving towards heel of hand.

### SAD



Index hands (palms back, pointing in/up) at sides of lips make a short downward movement.

### STRESSED



Clawed hands (palms forward/in, pointing forward/out) snatch back to chest closing to fists (palms back, pointing in) with working hand above. Use appropriate facial expression.

### CONFUSED



Open hands (palms back, pointing up) in front of face, make alternate inward circles.

### FEELINGS

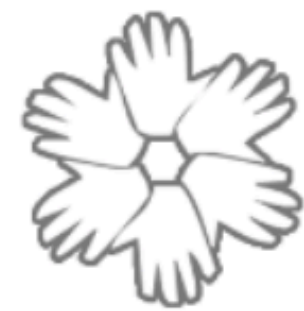


Working open hand (palm back, pointing in) brushes up against chest.





# FOOD



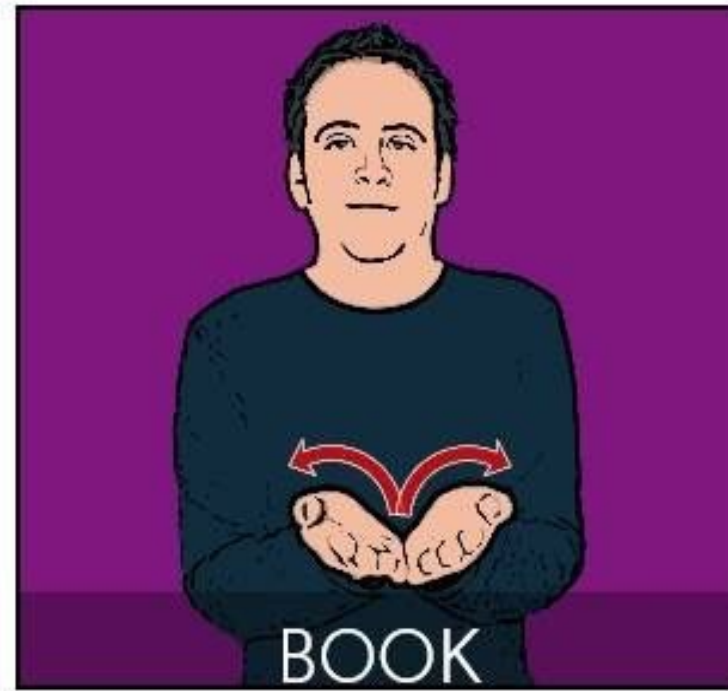
CREATED AT  
[british-sign.co.uk](http://british-sign.co.uk)



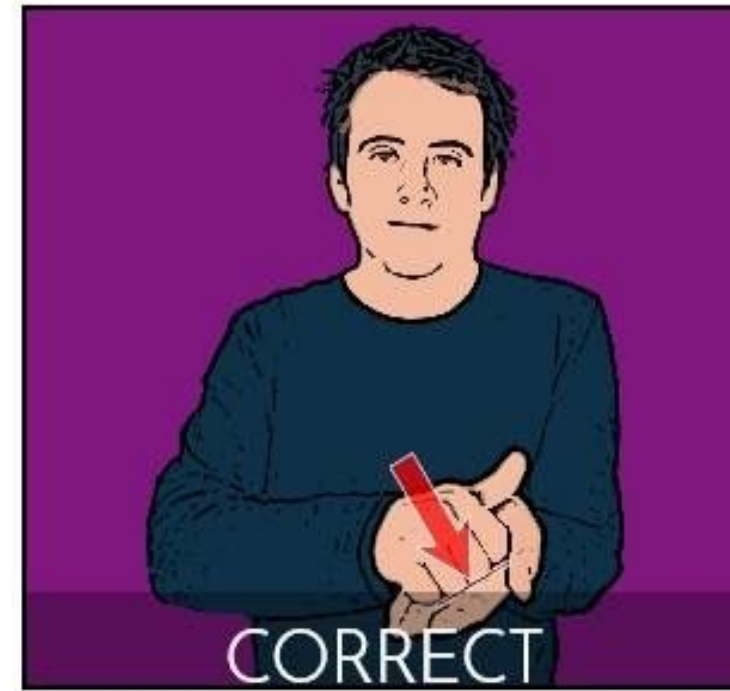




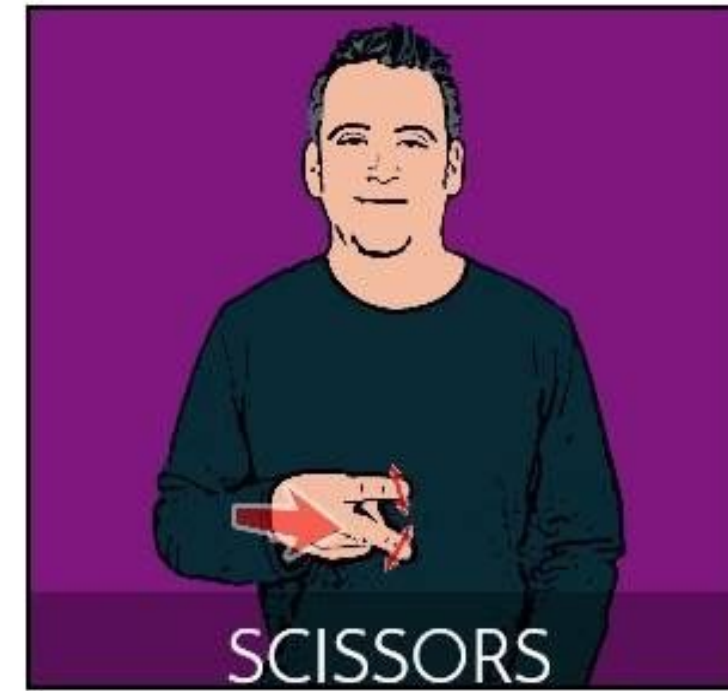
AGAIN



BOOK



CORRECT



SCISSORS



TOILET

# SIGNS YOU CAN USE IN SCHOOL

CREATED AT  
[british-sign.co.uk](http://british-sign.co.uk)



HELP



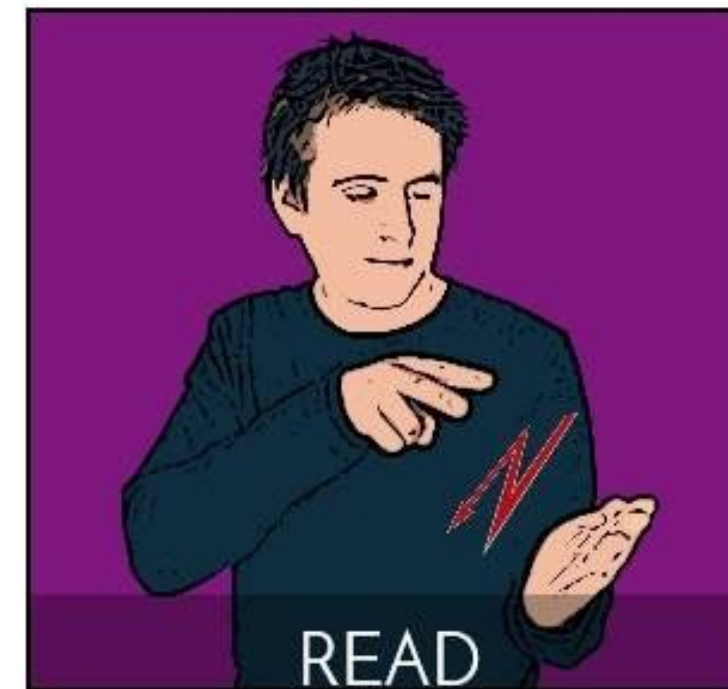
FRIEND



LUNCH



TIME



READ



### HAT



Bunched hands mime pulling hat on to head.

### SHOES



Working flat hand (palm down, pointing forward) above supporting flat hand (palm down, pointing in) moves along to supporting finger-tips and twists to palm up below supporting hand.

### COAT



Closed hands mime pulling on coat, follow with raised zip or buttons as appropriate if necessary. Shoulders shrug.

### SOCKS



"O" hands (palms in, pointing forward/down) at waist height make small upward movement.

### TROUSERS



Flat hands (palms in, pointing down) at waist height, make short movement down one leg and then the other.

### PANTS



Closed hands (palms back, pointing down) at waist make small upward movement.



# CLOTHES



### JUMPER



Closed hands (palms back, pointing in) contact upper chest and then lower chest.



© The SIGNALONG Group  
[www.signalong.org.uk](http://www.signalong.org.uk)  
E-mail: [info@signalong.org.uk](mailto:info@signalong.org.uk)

### T SHIRT



Flat hands (palms up, pointing in across body) against opposite upper arms, show length of sleeves.

### DRESS



Open hands (palms back, pointing in) at shoulder height, brush down body and outwards finishing palms back, pointing down/out.

### SWIMMING COSTUME



Flat hands (palms back, pointing in) brush up body. May be preceded by "swim" if necessary.

### BOOTS/WELLIES



Supporting flat hand (palm down, pointing in); working full "C" hand (palm down, pointing forward) moves over supporting hand to wrist, turns to palm in and moves up to show height of boot.

### SHORTS



Bent hands (palms in, pointing down) against front of thighs.





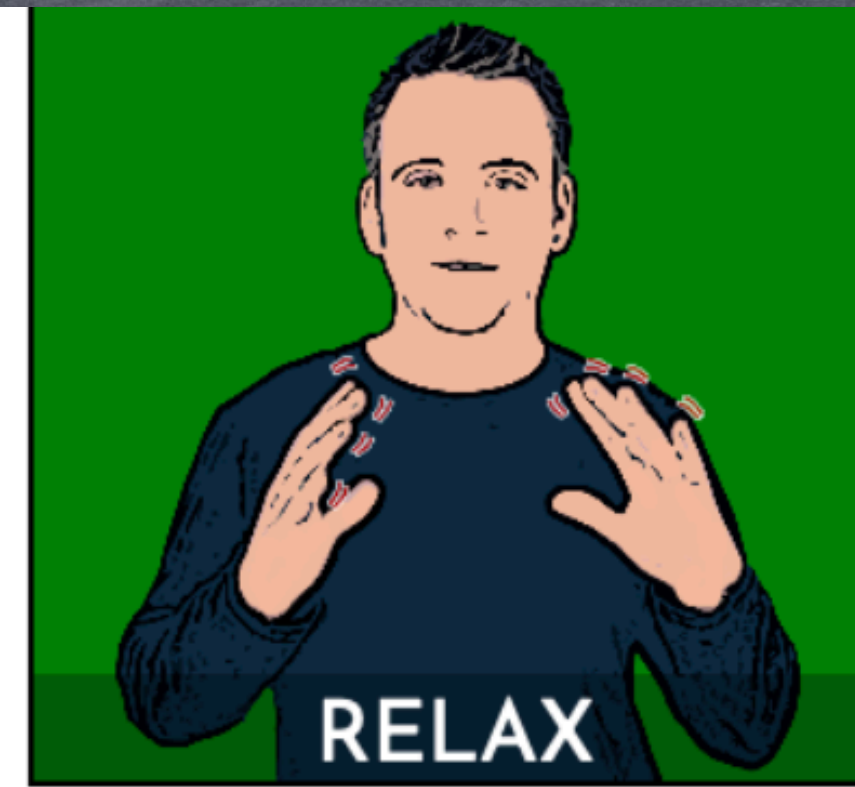
ARGUE



BATH



WALK

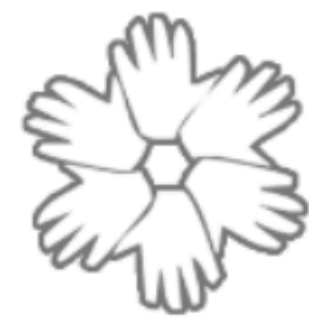


RELAX



SLEEP

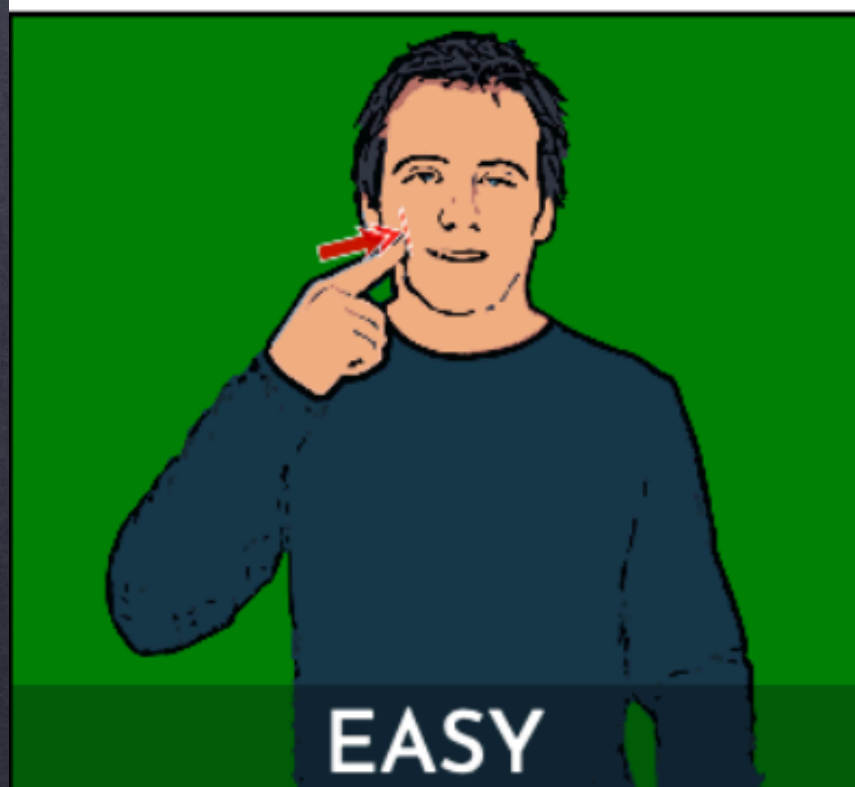
# ACTIONS



CREATED AT  
british-sign.co.uk



EXERCISE



EASY



DIFFICULT



FAST



SLOW





# POLITE WORDS



CREATED AT  
[british-sign.co.uk](http://british-sign.co.uk)





**WHAT?**



**WHICH?**



**WHEN?**



**HOW?**



**WHY?**



**WHERE?**



# Question Words



# Requirement 4

Learn and present at least one simple  
Christian song.



# Into My Heart

in BSL Sign Supported English (SSE)

Into



my



heart



(repeat 2 times)



Come,

Into

my

heart





Lord



Jesus





Come

in

today





Come

in

to stay





Come,

Into

my

heart





Lord



Jesus





2nd Verse

Out of



my



heart



(repeat 2 times)



Shine



out of



my



heart





Lord



Jesus





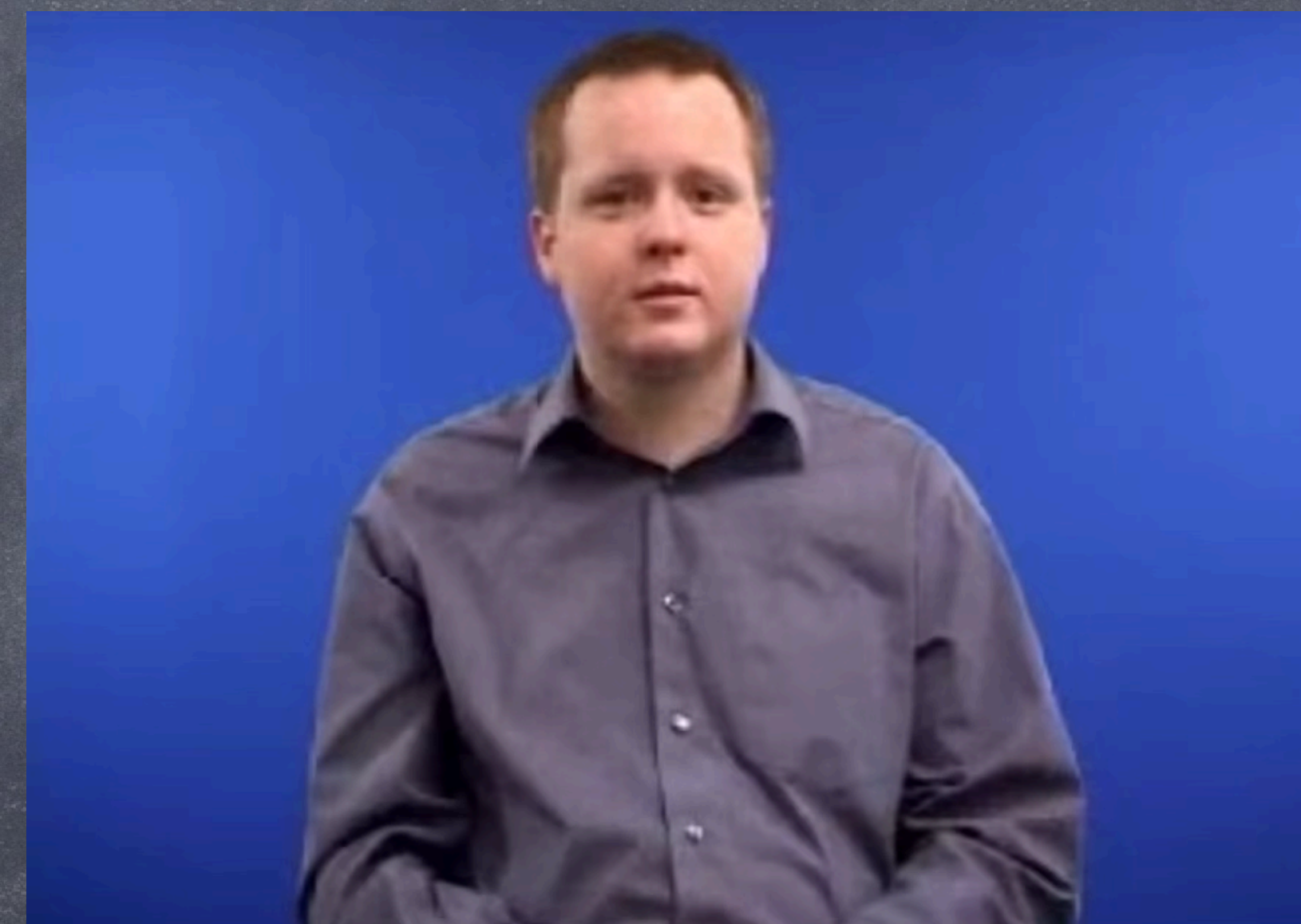
Shine



out



today





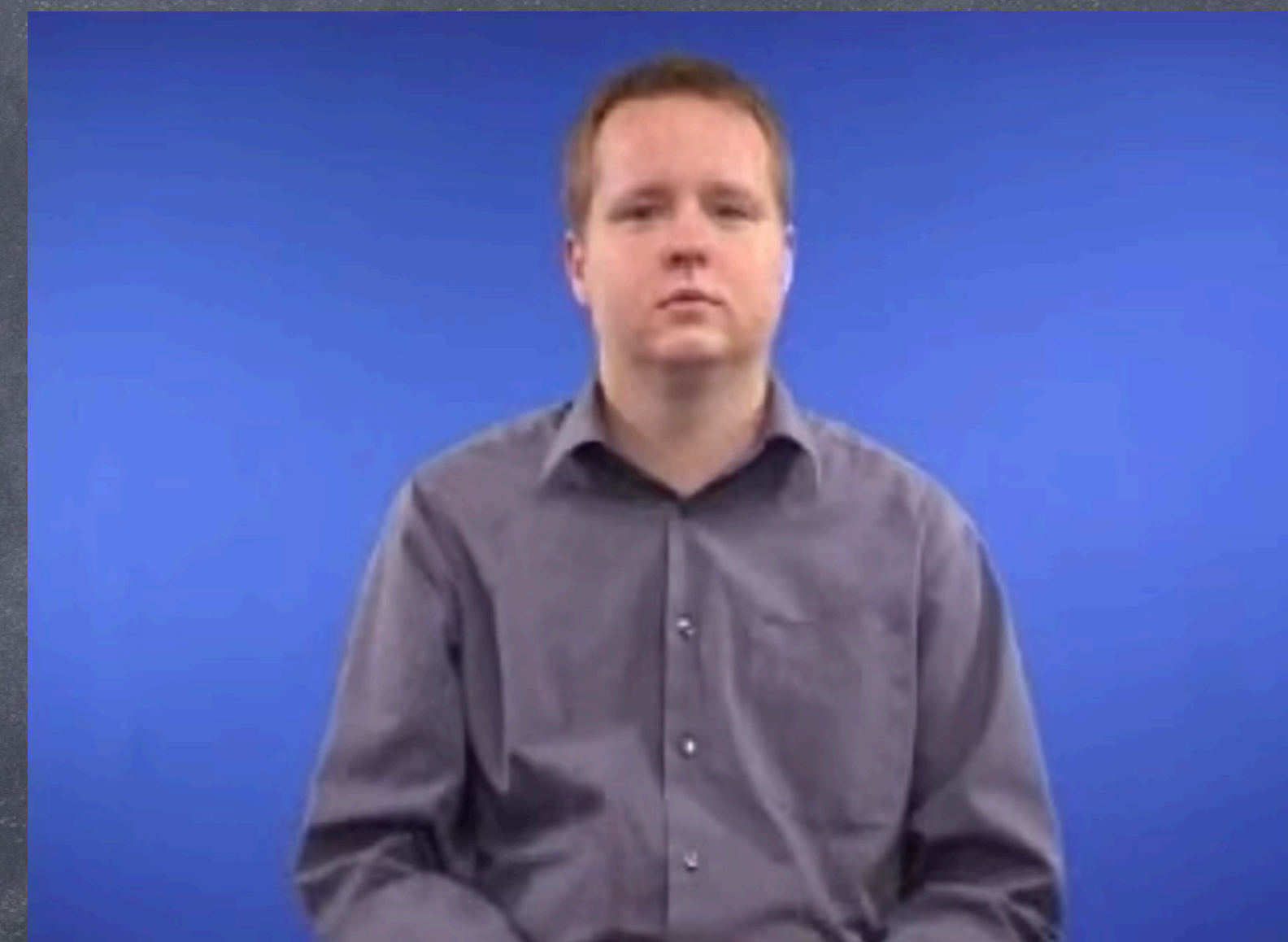
Shine



out



always





Shine



out of



my



heart





Lord



Jesus





# Requirement 5

Sign a simple Bible verse.



# Romans 12:12 ESV (BSL SSE)

Rejoice

in

hope.





# Romans 12:12 ESV (BSL SSE)

Patient

in

tribulation.

Patience





# Romans 12:12 ESV (BSL SSE)

Constant

in prayer.





# Requirement 5

Meet a deaf person and sign with them.



# Ways to Find Deaf Friends

- Keep your Eyes Open
- Contact the BUC Disabilities Ministries Department
- Contact Adventist Deaf Ministries International
- Southern Deaf Fellowship (Adventist Church)  
<https://deafchurchonline.org>
- Do an internet search for Deaf people/organisations in your area. Join an online social.





# Helpful Websites

<https://everydaybsl.wordpress.com>

[signBSL.com](http://signBSL.com) – video dictionary

[www.british-sign.co.uk](http://www.british-sign.co.uk) – dictionary,  
fingerspelling games

[christianbsl.com](http://christianbsl.com)

<https://bslsignbank.ucl.ac.uk> – video dictionary


[youtube.com](https://youtube.com)






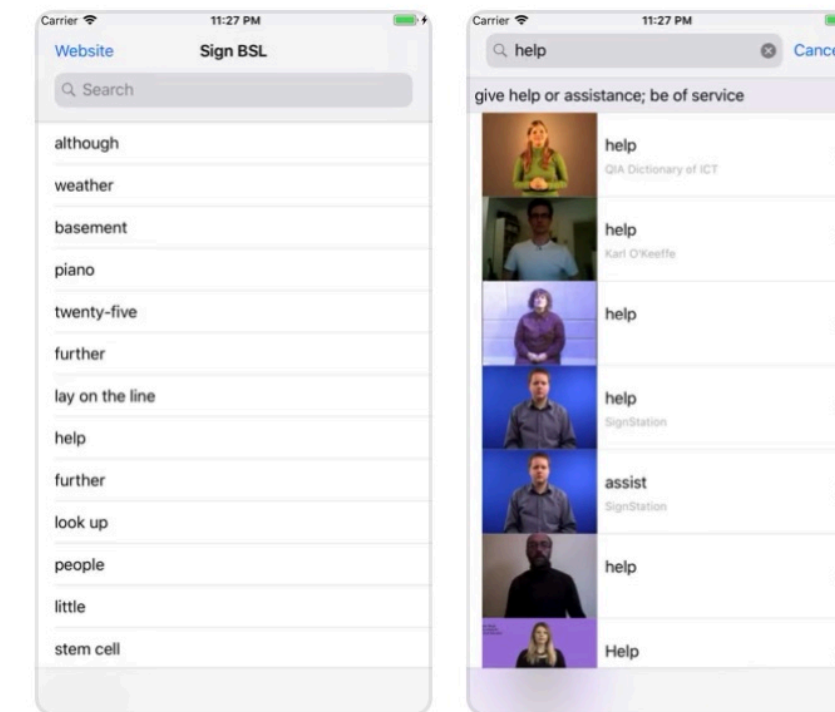
# Helpful Apps

- Sign BSL
- BSL Hands (One and Two)
- BSL Zone
- Spread Signs
- ITV Signed Stories
- Nursery Rhymes with Scarlett



Sign BSL  
Education  
★★★★☆ 58

OPEN



BSL Level One - Part 1  
Education  
★★★★☆ 48

GET

In-App Purchases

